

Environmental Impact Assessment Report

Beinneun 2 Wind Farm

Volume 3

Technical Appendix A8.1: Historic Environment Desk-Based
Assessment

Document prepared by Wessex Archaeology Ltd for Beinneun 2 Ltd

July 2025





Beinneun 2 Wind Farm, Invergarry

Historic Environment Desk-Based Assessment



Document Ref.: 292740.02
July 2025



© Wessex Archaeology Ltd 2025, all rights reserved

Unit R6
Sheaf Bank Business Park
Prospect Road
Sheffield
S2 3EN

www.wessexarch.co.uk

Wessex Archaeology Ltd is a company limited by guarantee registered in England, company number 1712772. It is also a Charity registered in England and Wales number 287786, and in Scotland, Scottish Charity number SC042630. Our registered office is at Portway House, Old Sarum Park, Salisbury, Wiltshire, SP4 6EB.

Disclaimer

The material contained in this report was designed as an integral part of a report to an individual client and was prepared solely for the benefit of that client. The material contained in this report does not necessarily stand on its own and is not intended to nor should it be relied upon by any third party. To the fullest extent permitted by law Wessex Archaeology will not be liable by reason of breach of contract negligence or otherwise for any loss or damage (whether direct indirect or consequential) occasioned to any person acting or omitting to act or refraining from acting in reliance upon the material contained in this report arising from or connected with any error or omission in the material contained in the report. Loss or damage as referred to above shall be deemed to include, but is not limited to, any loss of profits or anticipated profits damage to reputation or goodwill loss of business or anticipated business damages costs expenses incurred or payable to any third party (in all cases whether direct indirect or consequential) or any other direct indirect or consequential loss or damage.

Document Information

Document title	Beinneun 2 Wind Farm, Invergarry
Document subtitle	Historic Environment Desk-based Assessment
Document reference	292740.02
Client name	Beinneun 2 Ltd
Address	71 Queen Victoria Street, London, England, EC4V 4BE
Site location	Land north-west of Invergarry
County	The Highlands
National grid reference	223815, 811153 to 226796, 805706
Planning authority	Highland Council
Project management by	SGS
Document compiled by	IC
Graphics by	IC

Quality Assurance

Issue	Date	Author	Approved by
1	31/07/2025	IC/SGS	MT



Contents

Summary	iii
Acknowledgements.....	iii
1 INTRODUCTION	1
1.1 Project background.....	1
1.2 The Site	1
1.3 Development proposals	2
1.4 Scope of document.....	2
1.5 Aims	3
2 PLANNING BACKGROUND	3
2.1 Introduction.....	3
2.2 Designated heritage assets	3
2.3 The Protection of Military Remains Act 1986	4
2.4 National Planning Policy in Scotland.....	4
2.5 Local planning policy	5
3 METHODOLOGY	5
3.1 Introduction.....	5
3.2 Study area	6
3.3 Sources	6
3.4 Walkover survey	6
3.5 Assessment criteria – significance	7
3.6 Setting assessment	7
3.7 Assumptions and limitations.....	8
3.8 Copyright.....	9
4 BASELINE RESOURCE	9
4.1 Introduction.....	9
4.2 Designated heritage assets	9
4.3 Previous studies	10
4.4 Archaeological and historical context.....	10
5 ARCHAEOLOGICAL AND HISTORIC SURVIVAL, POTENTIAL AND SIGNIFICANCE.....	12
5.1 Previous Impacts and survival	12
6 POTENTIAL DEVELOPMENT EFFECTS	13
6.1 Introduction.....	13
7 SETTINGS ASSESSMENT	14
7.1 Introduction.....	14
7.2 Desk-based scoping exercise	14
7.3 Walkover survey observations and further scoping exercise.....	17
7.4 Fort Augustus-Berena military road, 1890 m west of Ceannacroc Lodge (SM11484) .	21
7.5 Corrieyairack Pass military road (SM6143, SM6142, SM6141, SM6140).....	22
7.6 Greenfield Farm, Cruck Framed Barn (LB50834).....	24
8 CONCLUSIONS	25
8.1 General.....	25
REFERENCES	26
Bibliography.....	26
Historic Environment Records.....	26
Cartographic and Documentary Sources	27
Online resources.....	27



ANNEXES	28
Annex 1: Terminology	28
Annex 2: Legislative and planning framework	29
Annex 3: Gazetteer of heritage assets within the Study Area	35
Annex 4: Settings visit photographs	37

List of Figures

- Figure 1: Site, 1 km Study Area and location of proposed Development
- Figure 2: Site, Study Areas and the location of designated heritage assets
- Figure 3: Site, 1 km Study Area and HHER Archaeological Events
- Figure 4: Site, 1km Study Area and HHER Monument Data
- Figure 5: Historic Mapping

Front cover: View of western edge of the existing Beinneun Wind Farm looking E



Summary

Wessex Archaeology was commissioned by Envams Ltd to prepare a Historic Environment Desk-Based Assessment to inform the proposed development of Beinneun 2 Wind Farm directly adjacent to the existing Beinneun Wind Farm, located to the north-west of Invergarry, the Highlands, centred on National Grid Reference 223815, 811153 to 226796, 805706.

This report is intended to inform the planning application for consent under Section 36 of the Electricity Act 1989 for the proposed Beinneun 2 Wind Farm and serves as a technical appendix to the cultural heritage chapter of the Environmental Impact Assessment Report.

The aims of this study were to assess the known and potential heritage resource within the site and the surrounding area, and to assess the likely impacts of the development proposals on this resource. The effect of the development proposals on the historic environment resource will be a material consideration in the determination of the planning application. This study has identified no overriding heritage constraints which are likely to prohibit development.

Overall, the site is considered to have limited potential for post-medieval remains given the generally low levels of known heritage asset data captured by the Historic Environment Record. Furthermore, the construction of the existing Beinneun Wind Farm did not encounter any archaeological remains during its construction.

Where non-designated assets are recorded within the 1 km study area considered in this report, they mainly represent post-medieval and modern activity. The remains of an abandoned post-medieval settlement, known as Daingean, are recorded c. 800 m to the south of the site. Considering the site's upland peat character, it is highly unlikely that associated settlement activity continued into the site.

The need for, scale, scope and nature of any further assessment and/or archaeological works should be agreed through consultation with the archaeological advisor to the Highland Council.

This HEDBA considered designated heritage assets within a 15 km Study Area for the purposes of a setting assessment. This was informed by the results of a ZTV assessment which was used to identify likely sensitive heritage assets to be taken forward for a settings walkover survey. The results of the walkover survey then informed which assets should be taken forward for further detailed settings assessment. These assets comprised two scheduled military roads (SM11484, SM6143, SM6142, SM6141, SM6140) and a Category C listed barn (LB50834). These are further considered in Chapter 8: Archaeology and Cultural Heritage.

Acknowledgements

This project was commissioned by Envams Ltd on behalf of Beinneun 2 Ltd, and Wessex Archaeology is grateful to Envams in this regard. Wessex Archaeology would also like to thank Highland Historic Environment Record for supplying the Historic Environment Record data.



Beinneun 2 Wind Farm, Invergarry

Historic Environment Desk-Based Assessment

1 INTRODUCTION

1.1 Project background

- 1.1.1 Wessex Archaeology was commissioned by Envams Ltd on behalf of Beinneun 2 Ltd ('the Applicant') to prepare a Historic Environment Desk-Based Assessment (HEBDA) in regard to the proposed construction of Beinneun 2 Wind Farm ('the Development') directly adjacent to the existing Beinneun Wind Farm, located to the north-west of Invergarry, the Highlands.
- 1.1.2 This HEDBA will be submitted as part of the planning application and will form the technical baseline of Chapter 8: Archaeology and Cultural Heritage of the Environmental Impact Assessment Report (EIAR).
- 1.1.3 This assessment considers the impact of all aspects of the Development, including the turbines, the associated foundations and hardstanding areas, the access tracks, the Battery Energy Storage System (BESS) and associated infrastructure, a meteorological mast, underground cabling and associated compounds. Collectively the redline boundary that encompasses these elements is referred to as 'the Site' (see **Figure 1**). The Site is centred on National Grid Reference (NGR) 223815, 811153 to 226796, 805706.
- 1.1.4 While a brief description of the Development is included for the purposes of this HEDBA, the full development description can be found in Chapter 4: Development Description of the EIAR.

1.2 The Site

- 1.2.1 The Site is located 5.4 km north-west of Invergarry and 11.3 km west of Fort Augustus in the Highlands. It borders the A87 east of Loch Loyne. It encompasses areas of commercial forestry and open land surrounding the existing Beinneun Wind Farm.
- 1.2.2 The Site lies south of the River Moriston and the River Loyne with tributaries intersecting with the Site. To the west lies Loch Loyne. The Site lies north of Loch Garry, and north of the commercial conifer forest that lies between Loch Garry and the Site.
- 1.2.3 The topography rises steeply across the Site from 250 m above Ordnance Datum (aOD) in the west adjacent to the A87, to c. 670 m aOD in the east, at Carn Tarsuinn.
- 1.2.4 The underlying bedrock geology throughout the Site is varied though dominated by both the Upper Garry Psammite Formation, and the North-west Highlands Minor Intrusion Suite – Microdiorite, Ultramafic-rock, and micaceous psammite. Small pockets of West Highland Granite Gneiss Intrusion, Loch Eil Group, Glen Garry Vein Complex, Argyll and Northern Highlands Granitic Suite, and Scottish Highlands Late Carboniferous to Permian Alkali Dyke Suite, are situated across the Site (British Geology Survey, Geology of Britain Viewer).
- 1.2.5 Small pockets of the Site are overlain by Hummocky (moundy) Glacial Deposits – diamicton, sand and gravel (British Geology Survey, Geology of Britain Viewer). Peat deposits are



present at various locations across the Site. Generally, these are relatively shallow at less and 0.5 m below ground level, however, deeper pockets between 1-3 m below ground level have also been noted (EIA Report Technical Appendix A12.2, Peat Landslide Hazard and Risk Assessment; Fairhurst, 2025).

1.3 Development proposals

1.3.1 Broadly, the main elements of the Development pertinent to this HEDBA are as follows:

- Up to 19 wind turbines (maximum tip height of up to 200 m). Each turbine will require a small transformer located either inside the tower or adjacent to it. The turbines will be light grey in colour to match the existing turbines. The specific model to be installed is currently not fixed, with a Vestas V172 being used as the candidate turbine for assessment purposes. Transformers will likely be p to c. 2.5 m in height.
- Foundations and crane hardstanding at each wind turbine location. The location of foundations will be determined by the results of ground investigations (GI) to be undertaken during enabling works. Each hardstanding area will be c. 115 m by 70 m and consist of crushed stone. There will be a smaller hardstanding area as well as additional flattened areas for the crane assist and blade finger areas.
- Access tracks linking the turbine locations comprising of 17.5 km of new tracks. The tracks will be constructed of a grade stone. Access tracks will be c. 5.5 m in width.
- Battery Energy Storage System (BESS) compound containing approximately 27 battery containers. The BESS will measure c. 100 m by 100 m. The units will be supported by Power Control System (PCS) units (comprising inverters and transformers).
- One meteorological mast of a height of up to 149.9 m.
- Network of underground cabling to be laid underground alongside or within the access tracks to a depth of c. 1 m below ground level.
- New substation compound measuring c. 100 m by 100 m. This will also allow for a Distribution Network Operator to facilitate the grid connection.
- Construction and storage compound. Two construction compounds are currently anticipated, forming an area of hardstanding for temporary cabins, parking and lay down areas. One will be at the proposed BESS compound, and estimated measurements of the other are c. 130 m by 60 m. The locations are shown on EIAR Figure 4.1 and details of compounds will be finalised following consent to allow flexibility in selecting manufacturing and models for construction.
- Borrow pits are proposed to be used to source stone for construction of the Development. Designs will be provided at detailed design stage, post-consent, when actual required stone volumes are known, with areas of search shown on EIAR Figure 4.1.

1.4 Scope of document

1.4.1 This assessment was requested by the Applicant in order to determine, as far as is possible from existing information, the nature, extent and significance of the historic environment



resource within the Site and its environs, and to provide an initial assessment of the potential impact of development on the heritage assets that embody that significance.

- 1.4.2 This desk-based assessment covers assessment of potential impacts (direct and indirect) on potential archaeology within the Site that might be affected by the construction of the Development as well as consideration of setting impacts on heritage assets within a defined study area surrounding the Site.
- 1.4.3 The Historic Environment, as defined in the *Historic Environment Scotland Policy Statement* (Historic Environment Scotland 2019) comprises:
- 1.4.4 ‘...the physical evidence for human activity that connects people with place, linked with the associations we can see, feel and understand.’

1.5 Aims

- 1.5.1 The specific aims of this assessment are to:
- outline the known and potential heritage assets within the Site based on a review of existing information within a defined study area;
 - assess the significance of known and potential heritage assets through weighted consideration of their valued components;
 - assess the impact of potential development or other land changes on the significance of the heritage assets and their setting; and
 - make recommendations for strategies to mitigate potential adverse impacts arising from the proposed development.

2 PLANNING BACKGROUND

2.1 Introduction

- 2.1.1 There is national legislation and guidance relating to the protection of, and proposed development on or near, important archaeological sites or historical buildings within planning regulations as defined under the provisions of the *Town and Country Planning (Development Management Procedure) (Scotland) Regulations 2013*. In addition, local authorities are responsible for the protection of the historic environment within the planning system.
- 2.1.2 The following section summarises the main components of the national and local planning and legislative framework governing the treatment of the historic environment within the planning process. Further detail is presented in **Annex 2**.

2.2 Designated heritage assets

- 2.2.1 Designated heritage assets are defined in *Historic Environment Scotland Policy Statement* (Historic Environment Scotland 2016a) as:
- Ancient monuments, which are designated through scheduling (‘Scheduled Monuments’);



- Buildings and other structures which are designated through listing ('Listed Buildings');
- Conservation areas;
- Historic marine protected areas;
- Gardens and designed landscapes ('Inventory Designed Gardens and Landscapes'); and
- Historic battlefields ('Inventory Battlefields').

2.2.2 Designation is a formal acknowledgement of a building, monument or site's significance, intended to make sure that the character of the asset in question is protected through the planning system and to enable it to be passed on to future generations.

2.2.3 Statutory protection is provided to certain classes of designated heritage asset under the following legislation:

- *Planning (Listed Buildings and Conservation Areas) Act (Scotland) 1997*; and
- *Ancient Monuments and Archaeological Areas Act 1979*.

2.2.4 The *Planning (Listed Building Consent and Conservation Area Consent Procedure) (Scotland) Regulations 2015* set out the process for applying for and determining applications for Listed Building Consent and Conservation Area Consent.

2.2.5 The *Town and Country Planning (Development Management Procedure) (Scotland) Regulations 2013* includes legislation and guidance on procedures for dealing with planning permission applications that affect a Scheduled Monument or its setting, a Category A Listed Building or its setting, an Inventory Garden or Designed Landscape, an Inventory Battlefield or a World Heritage Site.

2.2.6 Further information regarding heritage designations is provided in **Appendix 2**.

2.3 The Protection of Military Remains Act 1986

2.3.1 All military aircraft crash sites in the United Kingdom, its territorial waters, or British aircraft in international waters, are controlled sites under the Protection of Military Remains Act 1986. It is an offence under this act to tamper with, damage, move or unearth any items at such sites, unless the Ministry of Defence (MOD) has issued a licence authorising such activity.

2.4 National Planning Policy in Scotland

2.4.1 The principal national guidance on the importance, management and safeguarding of the historic environment within the planning process in Scotland is National Planning Framework 4 (NPF4) 2023. Policy 7 pertains to historic assets and places.

2.4.2 Further guidance is also given in the *Planning Advice Note 2/2011: Planning and Archaeology*, in the Historic Environment Scotland HEPS (2019) and in Historic Environment Scotland's *Our Past, Our Future* (2023).



2.4.3 The Historic Environment Scotland Act became law in December 2014. This established the role and function of Historic Environment Scotland (Àrainneachd Eachdraidheil na h-Alba) which replaced Historic Scotland and also took over the functions of the Royal Commission on the Ancient and Historical Monuments of Scotland (RCAHMS). It also makes amendments to the *Planning (Listed Buildings and Conservation Areas) (Scotland) Act 1997* and the *Ancient Monuments and Archaeological Areas Act 1979* as it is enacted in Scotland.

2.4.4 To summarise, government guidance provides a framework which:

- recognises that heritage assets are an irreplaceable resource;
- requires applicants to provide proportionate information on the significance of heritage assets affected by the proposals and an impact assessment of the proposed development on that significance;
- takes into account the desirability of sustaining and enhancing the significance of heritage assets and their setting;
- places weight on the conservation of designated heritage assets, in line with their significance; and
- requires developers to record and advance understanding of the significance of any heritage assets to be lost (wholly or in part) in a manner proportionate to their importance and impact, and to make this evidence (and any archive generated) publicly accessible.

2.4.5 A selection of excerpts from SPP and *Planning Advice Note 2/2011* is presented in **Annex 2**.

2.5 Local planning policy

2.5.1 The Site is situated within the administrative boundaries of The Highland Council, which adopted the *Highland-Wide Local Development Plan* in April 2012. The historic environment is addressed in Section 21 *Safeguarding Our Environment*.

2.5.2 The following policy outlined in that document apply to this assessment:

- Policy 57: Natural, Built and Cultural Heritage
- Policy 61: Landscape

2.5.3 Local planning policies, contained within the aforementioned documents, that relate to the historic environment and may be relevant to the proposed development are presented in **Appendix 2**.

3 METHODOLOGY

3.1 Introduction

3.1.1 The methodology employed during this assessment has been based upon relevant professional guidance including the Chartered Institute for Archaeologists' Standard and guidance for historic environment desk-based assessment (CIfA 2014, rev 2020).



3.1.2 Furthermore, the scope of this assessment was based on the approach presented in the Environmental Impact Assessment (EIA) Scoping Report submitted in November 2023. The Scoping Opinion received from historic environment consultees and any other subsequent communications with consultees are presented in Chapter 8: Archaeology and Cultural Heritage of the EIAR.

3.2 Study area

3.2.1 A Study Area of a 1 km radius of the Site was considered suitable to understand the known and potential archaeological resource. This reflects the study area that was previously selected for the 2012 application of the existing Beinneun Wind Farm. The recorded historic environment resource within the Study Area was considered in order to provide a context for the discussion and interpretation of the known and potential resource within the Site.

3.2.2 Taking into consideration the results of a Zone of Theoretical Visibility (ZTV) assessment prepared by the Landscape and Visual Impact Assessment (LVIA) Consultants (see Figures 5.1 and 5.2 in Volume 2a of the EIA Report), a 15 km Study Area was applied for the purposes of the settings assessment presented in this assessment. The ZTV was generated from the turbine locations in order to determine setting impacts to heritage assets as a result of the Development. This was considered appropriate considering the nature of the Development and that other elements of the Development (for example, associated transformers, substations etc.) would not exceed the height and visual presence of the proposed turbines.

3.2.3 The above study areas can be seen in **Figure 2**.

3.3 Sources

3.3.1 A number of publicly accessible sources of primary and synthesised information were consulted. These comprised:

- The Historic Environment Scotland Portal (HESP), which gives access to the database of all nationally designated heritage assets;
- The Highland Historic Environment Record (HHER), comprising a database of recorded archaeological sites, find spots, and archaeological events within the county;
- National heritage datasets including Archaeological Data Service (ADS), OASIS, and CANMORE;
- Historic manuscripts, surveyed maps, and Ordnance Survey (OS) maps; and
- Relevant primary and secondary sources held in Wessex Archaeology's own library. Both published and unpublished archaeological reports relating to excavations and observations in the vicinity of the Site were studied.

3.3.2 A bibliography of documentary, archive and cartographic sources consulted is included in the References section of this report.

3.4 Walkover survey

3.4.1 The walkover survey was undertaken on the 10th to 12th December 2024. Weather conditions varied throughout with intermittent cloud cover, fog and clear conditions. A fieldwork record comprising digital photography is held in the project archive and only selected photographs are included in this HEDBA (**Annex 4**).

- 3.4.2 The main aim of the walkover survey was to inform the setting assessment and understand the character, condition and setting of the Site and of the heritage assets selected to be visited as part of the walkover survey.
- 3.4.3 While the settings walkover survey was completed, it was not possible to gain access to the Site itself at the time. However, a subsequent visit was undertaken by a member of the project team to inform on Site conditions on 25th March 2025.
- 3.4.4 Furthermore, the observations informing the 2011 Archaeological Desk-based Assessment (Arcus Renewable Energy Consulting Ltd) undertaken to support the Beinneun I wind farm application were also taken into consideration in this assessment (see **Section 4.3**).

3.5 Assessment criteria – significance

- 3.5.1 The significance or value of heritage assets may derive from a number of different aspects of its character. Cultural significance can be artistic, archaeological, architectural, historic, traditional, aesthetic, scientific or social and may be intrinsic, contextual or associative (Historic Environment Scotland 2016a). Within this document, significance is weighed by consideration of the potential for the asset to demonstrate the following value criteria:
- **Scientific value:** Deriving from the potential of a place, site, monument or feature to yield evidence about past human activity. The archaeological interest of an asset contributes to this.
 - **Historic value:** Deriving from the ways in which past people, events and aspects of life can be connected through a place to the present. It tends to be illustrative or associative.
 - **Aesthetic value** Deriving from the ways in which people draw sensory and intellectual stimulation from a place site, monument or feature. The architectural interest of an asset contributes to this.
 - **Social value** Deriving from the meanings of a place for the people who relate to it, or for whom it figures in their collective experience or memory, whether this be in the past or the present. Communal values are closely bound up with the historic (particularly associative) and aesthetic values, but tend to have additional and specific aspects. For example, a building like a church might hold considerable social value bringing together a specific religious community.

3.6 Setting assessment

- 3.6.1 *Managing Change in the Historic Environment: Setting* (Historic Environment Scotland 2016b) defines the setting of a heritage asset as:

‘the way the surroundings of a historic asset or place contribute to how it is understood, appreciated and experienced.’

- 3.6.2 The aim of the setting assessment, presented in **Section 7**, was to explore the potential effects of the proposed development on the settings of designated and non-designated heritage assets situated within the wider context of the Site.
- 3.6.3 The manner in which the setting assessment was undertaken was guided by the recommendations outlined in *Managing Change in the Historic Environment: Setting* (Historic Environment Scotland 2016b) and *New Design in Historic Settings* (Historic

Scotland 2016). The guidance advocates a systematic and staged approach to the assessment of the implications of development in terms of their effects on the settings of heritage assets.

- 3.6.4 **Step 1** of the approach is ‘*identify the historic assets*’.
- 3.6.5 This initial step of the setting assessment has been carried out by undertaking a Scoping Exercise, the results of which are presented in **Section 7.3**.
- 3.6.6 The potential for the Development to effect change upon the settings of the heritage assets included in the Scoping Exercise was then assessed via the application of professional judgement, informed by observations made during the walkover survey and the results of a Zone of Theoretical Visibility (ZTV) figure prepared by the Landscape and Visual Assessment (LVIA) consultants for the Project.
- 3.6.7 Where it could be confidently determined that a heritage asset and its settings would not be affected by the development proposals, no further assessment was undertaken.
- 3.6.8 In cases where it could be anticipated that the development proposals may have the potential to alter the setting of a heritage asset, these assets were scoped in for further detailed assessment. These heritage assets were assessed on a case by case basis, in accordance with Steps 2 and 3 of the process outlined below.
- 3.6.9 **Step 2** is ‘define and analyse the setting by establishing how the surroundings contribute to the ways in which the historic asset or place is understood, appreciated and experienced.’ This stage of the assessment should consider:
- the present surroundings of the asset, including its relationship with other heritage assets;
 - the way the asset is appreciated; and
 - key views to and from the asset.
- 3.6.10 **Step 3** is ‘*evaluate the potential impact of the proposed changes*’.
- 3.6.11 Where the assessment indicates that there will be an adverse impact on the setting of a historic asset or place developers should consider design and siting proposals to mitigate this impact.
- 3.6.12 In accordance with the Historic Environment Scotland’s guidance on Environmental Impact Assessment, settings impacts are considered to be “direct” but not physical, following the following paragraph in the guidance (HES 2018, para. 44c):
- “These are generally direct and result from the proposal causing change within the setting of a heritage asset that affects its cultural significance or the way in which it is understood, appreciated and experienced. Such impacts are generally, but not exclusively, visual, occurring directly as a result of the appearance of the proposal in the surroundings of the asset.”*
- 3.7 Assumptions and limitations**
- 3.7.1 Data used to compile this report consists of secondary information derived from a variety of sources, only some of which have been directly examined for the purposes of this Study.



The assumption is made that this data, as well as that derived from other secondary sources, is reasonably accurate.

- 3.7.2 The records held by the HHER are not a record of all surviving heritage assets, but a record of the discovery of a wide range of archaeological and historical components of the historic environment. The information held within it is not complete and does not preclude the subsequent discovery of further elements of the historic environment that are, at present, unknown.
- 3.7.3 It is considered that the information sources used to inform this Desk-Based Assessment, together with the site visits undertaken to provide observations on the character of the Site and to support the consideration of “settings”, are proportionate and sufficient to adequately support the conclusions presented in this Assessment.

3.8 Copyright

- 3.8.1 This report may contain material that is non-Wessex Archaeology copyright (e.g., Ordnance Survey, British Geological Survey, Crown Copyright), or the intellectual property of third parties, which Wessex Archaeology are able to provide for limited reproduction under the terms of our own copyright licences, but for which copyright itself is non-transferable by Wessex Archaeology. Users remain bound by the conditions of the Copyright, Designs and Patents Act 1988 with regard to multiple copying and electronic dissemination of the report.

4 BASELINE RESOURCE

4.1 Introduction

- 4.1.1 The following section (**Section 4.2**) provides a brief overview of the known designated historic environment resource within the Site and the 1 km Study Area, while **Section 4.3** presents the archaeological and historical development. Assets within the 15 km Study Area and the 5 km Study Area are discussed in **Section 7.3** as part of the Scoping Exercise.
- 4.1.2 The background section was compiled from the sources summarised above and detailed in the references section of this report (**Section 9**). The aim is to establish the known and potential historic environment resource that could be affected by the Development.
- 4.1.3 All heritage assets identified within the Study Area are listed in **Annex 3** and presented on **Figure 2-4**.

4.2 Designated heritage assets

- 4.2.1 Designated heritage assets comprise World Heritage Sites, Scheduled Monuments, Listed Buildings, Conservation Areas, Inventory Gardens and Designed Landscapes and Inventory Battlefields.

Site

- 4.2.2 There are no designated heritage assets within the Site.

1 km Study Area

- 4.2.3 There are no designated heritage assets within the 1 km Study Area.



4.3 Previous studies

Site

- 4.3.1 No record of any previous intrusive archaeological investigation within the Site has been identified during the preparation of this assessment, however, previous non-intrusive desk-based assessments and walkover surveys partially overlap with the Site (EHG3222, EHG4439, EHG4545, EHG3851). These are carried out to support the operational wind farms in the area, namely Beinneun and Millennium.
- 4.3.2 The walkover survey for the existing Beinneun Wind Farm noted the presence of a post-medieval to modern fence line (recorded at location NH 25488 07675) with piles of stone (NH 24783 07590) and a circular area of unknown origin (NH23080 06869). None of these fall within the Development footprint as they were recorded within the north-eastern extent of the existing Beinneun Wind Farm site.

Study Area

- 4.3.3 There have been no intrusive archaeological investigations undertaken within the 1 km Study Area.
- 4.3.4 In addition to those desk-based assessments and walkover surveys referred to above, other such activities are recorded within the 1 km Study Area. These have largely, but not exclusively, been undertaken to inform previous planning applications for various large infrastructure projects within the area.
- 4.3.5 Where relevant, the results of these investigations are discussed in further detail in **Section 4.5**.
- 4.3.6 Previous archaeological investigations carried out within the 1 km Study Area are illustrated in **Figure 3**.

4.4 Archaeological and historical context

- 4.4.1 The following section provides a summary of the archaeological and historical development of the Site and the 1 km Study Area, compiled from the sources listed above. The potential for the likelihood of as yet unrecorded archaeological remains within the Site is informed by the consideration of the known heritage assets within the 1 km Study Area, in conjunction with the geology and topography of the area.
- 4.4.2 Records obtained from HESP, HHER and other sources are listed in **Annex 3** and illustrated in **Figures 2-4**.

Prehistoric (970,000 BC - AD 400)

- 4.4.3 Human activity throughout the Palaeolithic and Mesolithic periods was characterised by small bands of hunter-gatherers moving through the landscape. Coastal, island and riverine regions would have been favourable to the hunter-gatherer communities of these periods, due to the abundance of natural resources. Human occupation of Scotland may have been seasonal until the Mesolithic. Despite the Site's location within a riverine region, considering the presence of nearby lochs and rivers, there are no known Palaeolithic or Mesolithic finds or features within the 1 km Study Area.
- 4.4.4 The Neolithic and Early Bronze Age are characterised by a gradual transition from hunter-gatherer lifestyles to more settled societies concerned with agriculture and pastoralism. The Highlands have some of the most archaeologically significant Neolithic and Bronze Age

archaeology within Scotland, however, there are no known Neolithic or Bronze Age finds or features within the 1 km Study Area.

- 4.4.5 The Iron Age saw increasing settlement of the landscape, further development of trade networks and agriculture, and a growth in population. Ritual and funerary sites were no longer the most visible features within the landscape, with settlement sites becoming more of a focus during this period. Fortified settlements, known as duns and forts, began to appear in prominent places in the landscape, whilst crannogs were constructed on small islands (both artificial and natural) (SCARF). Once again, there is no evidence within the 1 km Study Area dating from the Iron Age period.
- 4.4.6 Overall, there is no evidence of prehistoric utilisation of the landscape within the 1 km Study Area, despite the overall attractive qualities of the riverine landscape to prehistoric communities. The Site lies within a rich peatland which may have contributed to the sparsity of activity here. This general lack of activity is perhaps also indicative of the paucity in archaeological investigations within the Highlands region, specifically within the 1 km Study Area. As such, there exists the possibility of as yet unknown prehistoric archaeological remains being present within the 1 km Study Area that have not yet been encountered via through archaeological investigations.

Early Medieval (AD 400–1100) – Medieval (AD 1100 – 1600)

- 4.4.7 The transition from the Iron Age to early medieval period in this part of the Highlands is subject to some debate. However, changes certainly occurred from the 3rd century AD with the earliest reference to the Picts from the late 3rd century onwards. The Picts dominated eastern Scotland and the Highlands as well until the 9th century. Changes in burial practices can be tentatively dated to this period, and a new religion certainly arrived by the late 6th century. Unlike the Iron Age, settlements are difficult to trace in most areas, though some continuity of Iron Age sites can be found.
- 4.4.8 The medieval period in the Highlands was very different from other areas of Scotland, as there was a noticeable political and cultural difference in the region. Its progressive integration into the Kingdom of Scotland from the later 11th century created particular tensions, conflicts and contrasts in its social, economic and broader cultural development of the Highlands. At the beginning of the medieval period, much of the central and southern Highlands (of which the Site is situated) were part of the Moray, under the rule of the historical MacBeth.
- 4.4.9 There are no known early medieval, or medieval archaeological finds or features present within the Study Area, which is likely a reflection of a general paucity in finds and features from these periods within the Highlands.

Post-medieval (AD 1500–1800) - 19th century (AD 1800–1900)

- 4.4.10 By the end of the medieval period, the Highlands definitively formed part of the Scottish kingdom. However, religious change and strife were major features in life for much of the period, often associated with kin, political and regional identity. This resulted in an abundance of conflict, both social and martial. Many of the political upheavals present across the whole of the British Isles during the period found local expression in the Highlands, and the region was often a driver for conflict and change across the entirety of the British Isles.
- 4.4.11 The post-medieval period marks the first known levels of activity within the 1 km Study Area, most notably the depopulated settlement of Daingean (MHG22989), situated c. 800 m to



the southern extent of the Site. It is located c. 1.3 km from the nearest proposed turbine location.

- 4.4.12 The settlement was first noted as an unroofed building, on the 1st edition OS map from 1875, however during forestry work near to the site a relatively large complex of structures were unearthed. The settlement is noted as one held by the Macdonell's of Glengarry over a period of several hundred years, there are limited references to the settlement within the historic record. In common with many townships on the Invergarry Estate it was cleared for sheep around the end of the 18th or beginning of the 19th century. A few families, possibly shepherds or cottar folk continued to stay here even though the land was converted to sheep farming. Elements of the settlement which have been identified include hand-ploughed rig and furrow, complex enclosures, several long houses, kiln barn, a turf-and-stone dyke, a utilitarian feature – barn or byre, several houses, timber structure, remnants of an enclosure wall, a small enclosure,
- 4.4.13 The only other noted post-medieval asset within the 1 km Study Area, is the Loyne Bridge (MHG22158), situated c. 485 m north-west of the Site.
- 4.4.14 Historic mapping of the area reveals that there have been few changes from 1872 through to the present day. The 1872 OS map shows that the area of Beinneun was a relatively featureless landscape crossed by burns and small rivers. While there appears to be a road connecting Invergarry to the settlement of Daingean (MHG22989), there does not seem to be an earlier iteration of the A87 based on late 19th century maps.

Modern (AD 1900–present day)

- 4.4.15 Aside from establishing the roads and the loss of Daingean (MHG22989), very little change occurred within the 1 km Study Area during the 20th century. Mapping post the 1950s shows the damming of Lochs (Loch Loyne Dam: MHG5869) and commercial forestry in close proximity to the Site, but few other developments.

5 ARCHAEOLOGICAL AND HISTORIC SURVIVAL, POTENTIAL AND SIGNIFICANCE

5.1 Previous Impacts and survival

- 5.1.1 It is anticipated that, as the Site has remained undeveloped, any disturbance to buried archaeological remains that may be present would be largely restricted to truncation caused by modern forestry activity, and historic agricultural activity (assuming that there has been at least some level of grazing within the lower areas of the Site where less peat is present).
- 5.1.2 Overall, there is good potential for archaeological remains to have survived undisturbed within the Site should they be present. This is mainly because of the presence of the peat which can create favourable conditions for survival. However, as stated below in section 5.2, the potential for encountering archaeological remains is considered to be limited. The construction of the existing Beinneun Wind Farm did not encounter any archaeological remains during its construction.

5.2 Archaeological potential and significance

- 5.2.1 Due to the lack of previous investigations within the 1 km Study Area based on the HHER data, the fact that no archaeological remains were recovered during the construction of the existing wind farm and the general paucity of known heritage assets within the 1 km Study Area, the archaeological potential of the Site is considered to be limited.



- 5.2.2 Overall, there is considered to be limited potential for Prehistoric activity within the Site boundary, as peat upland would not have provided suitable settlement conditions throughout prehistory, though it may have been exploited for resources and/or used as seasonal pasture. This limited potential carried from the Bronze Age to at least the start of the post-medieval period when it appears as though settlement and agricultural activity becomes more common. Notably, not within the peat uplands.
- 5.2.3 Considering the general lack of archaeological remains within the Site, any remains would be of interest. In general, evidence of land management would likely be of less interest than settlement evidence, however, this depends on its date, nature, extent, condition and survival.
- 5.2.4 The HHER data and historic maps confirmed the continued lack of utilisation of the landscape of the Site into the post-medieval and 19th century, with only one known post-medieval settlement within the wider 1 km Study Area, which was subsequently abandoned before the end of the 19th century. If further evidence of post-medieval or 19th century land management or occupation was present within the Site, it would likely be of local interest.
- 5.2.5 Based upon the review of information presented in **Section 4**, the Site is situated in an area of limited archaeological potential. Any potential archaeological evidence would likely come from the post-medieval period, relating to land management or rural occupation. For post-medieval to modern assets, especially those with upstanding remains, their cultural significance will likely be informed by a combination of their historic, scientific, aesthetic and social values. The degrees of how these values contribute to their overall significance will vary depending on their type, nature, condition and survival.

6 POTENTIAL DEVELOPMENT EFFECTS

6.1 Introduction

- 6.1.1 This section provides an initial assessment of the potential effects of the proposed Development in relation to elements of the historic environment resource that may be subject to physical impacts. This is informed by the details of the Development presented in **Section 1.3**.

6.2 Statement of potential impact

Archaeological remains

- 6.2.1 There are no known archaeological remains present within the Site boundary that could be impacted by the Development.
- 6.2.2 With regards to unknown sub-surface archaeological remains, the implementation of the Development is anticipated to entail the following sources of ground disturbance and excavations:
- Construction and enabling activities, such as setting up the compounds within the Site, plant movement, creation of temporary access tracks which could require topsoil stripping.
 - Excavation of new foundations and crane hardstanding for the turbines, their associated transformers, the BESS and associated infrastructure, the substation compound, and of the cables (which is anticipated to be up to 1 m below ground level).



- Excavation of borrow pits.
- Establishment of the new access route, and internal access tracks;
- Erection of the meteorological mast.
- Installation of grid connection cabinet and transformation enclosures.

6.2.3 The most destructive elements of the Development in terms of below ground archaeology (should any such remains be present within the Site) would be those associated with the main construction areas, i.e. foundations for the BESS (including associated infrastructure), the substation and the turbines (including the transformers), and within the footprint of the borrow pits and cables. New sections of access tracks have the potential for impacts as well, however, these will likely be shallower.

6.2.4 The potential for areas of hardstanding to impact any sub-surface remains would be dependent on the depth of the hardstanding but is likely only to impact the upper soil horizons.

Summary

6.2.5 Whilst it is considered unlikely to encounter unknown archaeological remains within the Site, the aforementioned works have the potential to result in the damage to or loss of any buried archaeological features which may be present within their footprint. This could, in turn, result in a total or partial loss of significance of these heritage assets.

6.2.6 Any adverse impact to buried archaeological features would be permanent and irreversible in nature. This potential adverse effect could be reduced through the implementation of an appropriate scheme of archaeological mitigation, discussed below.

6.2.7 Overall, given the scale of the Site, the potential for sub-surface impact to impact any below-ground archaeological remains is low.

7 SETTINGS ASSESSMENT

7.1 Introduction

7.1.1 This section presents an assessment of the potential effects of the Development in relation to the settings of heritage assets, in accordance with the methodology set out in **Section 3.6**. The extent of the 15 km Study Area can be seen in **Figure 2**.

7.2 Desk-based scoping exercise

7.2.1 As presented in the Scoping Report (Envams 2023), a 15 km Study Area was initially proposed to consider the potential for setting impacts (to designated heritage assets in particular). The Study Area was used as a guidance tool and informed by the results of a Zone of Theoretical Visibility (ZTV) assessment undertaken by the Landscape and Visual Impacts (LVIA) consultant. Assets outside of the 15 km Study Area, especially where they are just outside of this range or where there is potential for prominent intervisibility with the turbines, are considered on a case by case basis.

7.2.2 The 15 km Study Area broadly extends to Loch Beinn a' Mheadhoin to the north, Fort Augustus and Loch Ness to the east, Loch Lochy to the south and beyond Loch Cluanie to the west. Within this area, there are 21 Scheduled Monuments, 78 Listed Buildings (five Category A, 45 Category B and 28 Category C) and one Battlefield (Blar na Leine, BTL29).



- 7.2.3 The Scoping Opinion from Historic Environment Scotland also identified the scheduled Cherry Island at Loch Ness (SM9762) as an asset which will require consideration. At the time of the Scoping Report, this fell outside of a broad 15 km range. This asset is now just within the 15 km Study Area as presented on **Figure 2**, and as such this is included in this scoping exercise.
- 7.2.4 To inform the LVIA prepared for the EIAR, two ZTV (one bare earth ZTV) were produced (see Figures 5.1 and 5.2 in Volume 2a of the EIA Report). The ZTV show that there will unlikely be significant visibility beyond 15 km. While the Development might be visible beyond this from areas to the south of Loch Ness, to the east of Loch Lochy, to the south of Lock Guiach and to the north of Invermoriston, these are largely limited to the higher points within these locations.
- 7.2.5 While intervisibility between an asset and the Site does not necessarily equate a setting impact, considering the potential for visibility does allow an early sifting exercise to be undertaken. Where no visibility is suggested, this is assumed that there would be no harm to the cultural significance of an asset as no setting impact is predicted.
- 7.2.6 Based on the ZTV, the three Listed Buildings along the northern edge of the 15 km Study Area at Glen Affric lie within areas of no intervisibility (Glen Affric Lodge LB7121, Plodda Cottage LB8107, Former Stables at Guisachan LB8125). The ZTV suggests that this also applies to those Listed Buildings further north-east of these which fall outside of the 15 km Study Area. As such, all of these assets have been scoped out of the walkover survey.
- 7.2.7 A group of assets stretches east to west along the A87 to A887 to the north of the Site. East to west these comprise Dundreggan Farm (SM11875), a Category A bridge over the River Moriston (LB14996), Tir nan Og cairn (SM11494), a section of the Fort Augustus-Bernera military road (SM11483), Achlain House (LB14995), Balnacarn township (SM11482), the old River Moriston bridge (LB14994) and the main section of the military road which starts at Loch Cluanie (SM11484). The farm (SM11875), the Category A listed bridge (LB14996), the cairn (SM11494), Achlain House (LB14995) and the small section of the military road (SM11483) to the south/south-east of Achlain House (LB14995) do not lie in areas of visibility. As such, all of these have been scoped out of the walkover survey. The remaining Balnacarn township (SM11482), the old bridge (LB14994) and the main section of the military road (SM11484) were taken forward to the walkover survey.
- 7.2.8 The remaining designated heritage assets within the 15 km Study Area are broadly located at Fort Augustus (which includes the scheduled Cherry Island, SM9762), Invergarry and Laggan, although there are also three Listed Buildings which fall outside of these areas. The three Listed Buildings are the Great Glen Hydro Electric Scheme dam and gatehouse towers (LB51704), Greenfield Farm (LB50834) and a mid-18th century house known as Letterfinlay (LB6834). Both the dam and the house are located in areas of no visibility and are therefore scoped out of further assessment. The farm is scoped in for the purposes of the walkover survey as visibility is suggested and as this asset was previously assessed for the existing Beinneun Wind Farm application.
- 7.2.9 The ZTV shows that Invergarry lies within an area of no visibility. While there might be some visibility from Loch Oich based on the bare earth ZTV, the ZTV including woodland cover shows that this is limited to the eastern side of the loch. The only asset which may have visibility at Invergarry is the suspension footbridge over the River Garry (LB6828). As such, all assets at Invergarry with the exception of the bridge have been scoped out of further assessment. This includes Invergarry Drynachan (LB6845) and Leitirfearn (LB48927) which are outside of the village core.



- 7.2.10 The heritage assets at Laggan include those that fall within the bounds of Blar La Leine Battlefield (BTL29) and the listed well of the Seven Heads Monument (LB6825). The other assets within this group include the scheduled section of the Caledonian Canal at Laggan Locks (SM6494), Kilfanna Burial Ground and McDonnell Mausoleum (LB6833), and a store (LB52232) and two cottages (LB6865, LB6866) at the lock. The ZTV shows that the scheduled canal and the Listed Buildings within this group have no intervisibility. According to the bare earth ZTV, there may be limited sections of the battlefield from where there might be intervisibility. To get a better understanding of the battlefield, this asset is scoped in for the walkover survey.
- 7.2.11 There is a group of assets located between Aberchalder and Fort Augustus which are broadly connected by the scheduled sections of the Caledonian Canal (SM6495, SM6496, SM649, SM3614). This group includes the different sections of Corrieyairack Pass military road (SM6143, SM6142, SM6141, SM6140) which extends in a south/south-easterly directions south from Fort Augustus.
- 7.2.12 The ZTV shows that the southern section of the canal (SM6495) as well as the Listed Buildings at the Bridge of Oich do not lie within an area of visibility. This includes the listed Railway Cottage (LB1844) located at the A82 heading towards Fort Augustus (based on the ZTV including the wooded areas).
- 7.2.13 Heading northwards along the canal, the bare earth ZTV suggests that there might be at least two small areas from which a limited amount of turbines (1-6 turbines) might be visible (SM6496, SM6497). Based on the other ZTV, this is, however, highly unlikely based in the woodland cover along the canal from Inchnardoch Forest. Considering the canals location on lower ground, the presence of the woodland which extends north, north-west and west of the canal towards the uplands and the fact that the setting of the canal is defined by its relationship with the River Oich and the Great Glen Way towards Fort Augustus, this asset is scoped out of further assessment.
- 7.2.14 Torr Dhuin, a scheduled fort to the south-west of Fort Augustus and north of the canal (SM6496) lies within an area of no visibility in the forest and is thus also scoped out.
- 7.2.15 Directly at Fort Augustus, the bare earth ZTV suggests that there might be some visibility from within the village, however, based on the other ZTV, this appears to be limited to areas where there are no designated heritage assets. As such no specific assets here are scoped into the walkover survey, but the village is still to be visited as part of gathering general observations and an understanding of whether the existing wind farm is visible when travelling between Fort Augustus to Invergarry. In regard to Cherry Island (SM9762), the ZTV shows that this is located within an area of no visibility. As such, this asset is scoped out of further assessment.
- 7.2.16 The remaining assets comprise three Listed Buildings to the east of Fort Augustus (LB1884, LB1885, LB1869), and five Listed Buildings to the north of Corrieyairack Pass military road (SM6143, SM6142, SM6141, SM6140). The three buildings to the east of Fort Augustus lie in an area of no visibility along the B862 and are therefore scoped out. Similarly, this is also the case for the group of five Listed Buildings to the north of the military road (LB1851, LB1845, LB1859, LB1857, LB1858).
- 7.2.17 In regard to Corrieyairack Pass military road (SM6143, SM6142, SM6141, SM6140), it appears as though there might be limited sections along the road from where the turbines might be visible, especially from sections SM6142, SM6141, SM6140 (based on the bare earth ZTV). The ZTV suggests that these views will not be possible when traversing across



all sections and will instead be intermittent. This does not appear to change even when looking at the other ZTV containing woodland/tree cover. Whilst it is not anticipated that the addition of turbines within limited views along the path would lead to significant setting impacts, this asset is scoped on for the settings assessment.

7.2.18 Based on the above, the initial desk-based scoping exercise has identified the following assets to be taken forward for the walkover survey:

- Balnacarn township (SM11482);
- Ceannacroc Bridge (old) over River Moriston (LB14994);
- Fort Augustus-Berneria Military Road (SM11484);
- Greenfield Farm (LB50834);
- Suspension footbridge over River Garry by Hydro Dam (LB6828);
- Blar na Leine (BTL29).

7.2.19 Looking at the non-designated heritage asset resource within the 1 km Study Area, the non-designated Loyne Bridge (MHG22158), the associated dam (MHG58693) and a modern commemorative cairn (MHG58926) are also scoped in for the purpose of the walkover survey.

7.2.20 Observations of Corrieyairack Pass military road (SM6143, SM6142, SM6141, SM6140) were taken from accessible roads between Fort Augustus and Aberchalder. For the purposes of the LVIA, the track was visited for the creation of Viewpoint 9 (see Volume 2b of the EIA Report). This viewpoint is discussed in this HEBDA where relevant.

7.2.21 The Environmental Statement (ES) for the 2012 application for Beinneun Wind Farm also included an assessment of the non-designated Mackenzie's Cairn. The cairn lies on the south side of the A887 c. 1 km north-east of Ceannacroc Bridge (LB14994). This asset is not scoped in for the purposes of this assessment as the ZTV does not indicate the potential for visibility.

7.3 Walkover survey observations and further scoping exercise

Balnacarn township (SM11482)

7.3.1 The Scheduled Monument captures the remains of a township dating from the 18th to early 20th century. It survives as a series of earthworks including low stone footings set within an area of rough pasture to the west of Dalchreichart. It is dissected by a road which runs east to west across its approximate centre.

7.3.2 The walkover survey showed that some of the northern turbines of the existing Millennium Wind Farm are clearly visible from the road, but these views did not extend towards the existing Beinneun Wind Farm. However, it must be noted that long distance visibility to the south/south-west was impacted by fog cover.

7.3.3 While the bare earth ZTV suggests that visibility of the Development might be possible, the ZTV including woodland cover indicates that this would be restricted to a small part of the most north-eastern corner of the Scheduled Monument (towards the woodland boundary at Balnacarn). Considering that the Development lies behind the existing Beinneun Wind



Farm, which was not visible in views on the day of the walkover survey, it is assumed that this will be heavily influenced by weather conditions.

- 7.3.4 The cultural significance of this asset primarily lies in its scientific value (that is, its archaeological interest and potential) and historic value associated with the former settlement. It is considered to be a well preserved example of an agricultural township which today is largely preserved as buried earthworks. Its setting is defined by the pasture fields within which it lies and its relationship with the River Moriston and its tributary (Allt na Muic) which runs along its western boundary. While the Site lies within background views from the scheduled township as its position allows it good views across the southern mountain range, this in itself is not considered to form part of the setting of this asset.
- 7.3.5 The visibility of possibly a further couple of additional turbines from the most north-eastern corner of the asset when looking across the mountain range is not considered to lead to a change in its setting. Instead, any potentially visible turbines would be seen as sitting on the fringe of the existing Millennium Wind Farm which already has a strong presence along the mountain range.
- 7.3.6 Based on the above, it is not considered that there is potential for setting impacts and this asset is not taken forward for detailed settings assessment.

Ceannacroc Bridge (old) over River Moriston (LB14994)

- 7.3.7 The Category B listed Ceannacroc Bridge is a rubble stone bridge with tooled granite dressings. The main arch of the bridge spans approximately 15 m whilst a secondary flood arch spans approximately 11 m. It crosses the River Moriston which is flanked by areas of tree cover and is sited on slightly lower ground than the A887 to the south.
- 7.3.8 The walkover survey showed that the slopes of the hill leading towards Beinneun Forest are visible from the bridge and that at least the northern turbines of the existing wind farm can be glimpsed from here (although it is assumed that this is somewhat seasonally dependent).
- 7.3.9 The ZTV including the woodland cover suggests that, while the existing wind farm is visible, this will not apply for the Development. This is because this effectively sits behind those available views on the slopes leading away from the bridge on the other side of the hill and not towards the bridge.

The bridge has been listed to protect its architectural and historical values. The setting of the bridge is highly focused along the River Moriston on account of its primary function is as a river crossing. The ability to understand its purpose, design and historic value is therefore directly tied to the river and road way.

Based on the above, the walkover survey and initial consideration of the asset's setting and cultural significance suggests that the Development will not lead to setting impacts to this asset. As such, Ceannacroc Bridge (LB14994) is scoped out of further assessment.

Fort Augustus-Berneria Military Road (SM11484)

- 7.3.10 The military road is of 18th century date to the north of Loch Cluanie which mostly survives as a grass and heather covered track.
- 7.3.11 During the walkover survey it was not possible to access the military road, so observations of it were limited from the A87 and Loch Cluanie Viewpoint, from the A887 and an existing



access gate to Beinneun Wind Farm opposite Loch Loyne. From these locations, the course of the Scheduled Monument was not visible.

- 7.3.12 Both the bare earth and tree cover ZTV suggest that for the most part the Development would be visible from this asset. As such, it is scoped in for detailed settings assessment.

Corrieyairack Pass military road (SM6143, SM6142, SM6141, SM6140)

- 7.3.13 Observations of the military road were limited from the A82 between Aberchalder and Fort Augustus. The start of the military road lies c. 200 m to the east of the A82 where it runs along the eastern edge of Loch Uanagan. The best views of the mountain range where the road is located are from when leaving Fort Augustus and heading south towards Aberchalder as there is relatively little woodland cover here. Further south towards Loch Uanagan, trees and shrubs line the road. The road itself is not easily distinguishable in these views on account of the presence of other tracks and the rocky outcrop.

- 7.3.14 From Loch Uanagan, especially from the junction with Ardachy, there are no more direct views towards the military road due to the slope of a hill which sits in front of the mountain range the road traverses. Views towards the road do not open up until Aberchalder. From there, there are some views towards the road looking east, however, once again the road itself is difficult to see on account of the intermittent tree cover on the mountain range.

- 7.3.15 As access to the road itself was not possible at the time of the walkover survey, this asset is scoped in for further setting assessment.

- 7.3.16 Viewpoint 9 shows that views from sections of the pass are open and long distance. A modern pylon line runs in the foreground and the existing Beinneun Wind Farm and Millennium Wind Farm are visible, so are the mountain ranges beyond them.

- 7.3.17 Aside from the woodland at Inchnacardoch Forest, there appears to be relatively woodland cover and no major settlements or roads are discernible (at least from the location at Viewpoint 9).

Greenfield Farm (LB50834)

- 7.3.18 The farm is thought to date from the late 18th century. It is a single storey, cruck framed barn with red corrugated iron roof and three rooflights. It is the remnant of a former township.

- 7.3.19 During the walkover survey the minor roads leading towards this asset were inaccessible. Therefore, it was not possible to take observations from the asset towards the Site. However, observations towards the asset were taken from various viewpoints and laybys along the A87.

- 7.3.20 To further understand the cultural significance and setting of this asset, it is scoped in for further assessment.

Suspension footbridge over River Garry by Hydro Dam (LB6828)

- 7.3.21 The Category C listed footbridge is of late 19th century date. It has short cast iron end columns linked by a round headed with wooden deck. It is sited by the dam at the eastern corner of Loch Garry.

- 7.3.22 While access was attempted during the walkover survey, an industrial business had limited access along the footpath towards the bridge on the day of the survey. As such, it was not possible to walk across the bridge. It was, however, possible to get an understanding of its setting from the A87 heading from Glengarry Viewpoint East towards Invergarry.



7.3.23 The setting of the bridge is clearly defined by its functional and historic relationship to the dam and to the loch beyond that. While the ZTVs suggest that views from the bridge towards the Site might be possible, these will be entirely incidental views. Turbines may be glimpsed in background views, however, these would not impede key views towards the dam or the loch. The ability to appreciate the setting along the loch and dam will not be impacted, neither will its architectural or historic values which comprise its cultural significance.

7.3.24 Based on the above, the suspension footbridge is scoped out of further assessment.

Blar na Leine (BTL29)

7.3.25 The battlefield captures the extent of Blar na Leine, a significant tribal war between a group of the Frasers and Macintoshes under Lord Lovat and Ranald Gallda, and a group of MacDonalds and Camerons under John Moidartach. The battle represents the often brutal and long drawn out bitterness between clans. The battle eventually settled the issue of leadership of Clanranald.

7.3.26 The extent of the battlefield broadly covers the key areas of action which include the flat plain at the northern end of Loch Lochy (where the main fighting is said to have taken place), the A82 which marks the route of the Frasers towards the loch, the lower slopes of Ben Tigh (where Clanranald attacked the Frasers) and the area surrounding Kilfinan Church where bodies were buried. Based on the ZTV, the part of the battlefield that falls within an area of potential visibility falls to the south/south-east of the A82, outside of the band of existing woodland of South Laggan Forest. This was corroborated by the walkover survey which determined that the Site nor either the existing Beinneun or Millennium Wind Farms were visible and within the setting from the core area at Laggan Locks or near the church.

7.3.27 It is not considered that the very small area from where the Development might be visible within the south-eastern extent of the battlefield boundary outside South Laggan Forest would lead to such a change in the background of the asset as to lead to setting impacts. Furthermore, glimpsed visibility of turbines, if at all possible, would not impact our understanding of the historic importance or battlefield movements.

7.3.28 As such, this asset is scoped out of further assessment.

Loyne Bridge (MHG22158) and associated dam (MHG58693)

7.3.29 The non-designated bridge and dam were constructed as part of a wider Hydroelectric scheme (the Great Glen Hydroelectric Power Scheme) in the Highlands dating to the 1950s. The dam was completed in 1957 after having been started a year before that. It is assumed that the bridge is of a similar date.

7.3.30 The dam was visible from the existing, secondary access gate of the existing Beinneun Wind Farm opposite Loch Loyne (NGR 220167 807404). This showed that the setting of the dam and bridge is focused on their relationship with the loch (which lies to their west) and the River Loyne (which lies to their east). As with the listed suspension footbridge at Loch Garry, views towards the Site are entirely incidental and would not detract from the cultural significance of this asset or its setting focused on the key bodies of water.

7.3.31 Based on the above, these assets are scoped out of further assessment.

Commemorative cairn (MHG58926)

7.3.32 A modern commemorative non-designated cairn to William MacRae is situated on the A87 above Loch Loyne approximately 897 m south-west of the existing, secondary access gate to Beinneun Wind Farm. William MacRae died at the location on 6th April 1985 and was

regarded as 'A Scottish Patriot' according to the inscription. McRae was primarily known as a Scottish lawyer, naval officer and politician.

- 7.3.33 The walkover survey showed that the small cairn is clearly visible travelling along the road with Loch Loyne forming its background. An area of what appeared to be compacted gravel is next to the monument (presumably for access), however, this was not accessible at the time of the walkover survey.
- 7.3.34 The roadside setting of the monument on the side of the A87 is important here as it broadly denotes the site where the incident occurred. The ability to have views of the surrounding landscape and what these view contain is less important here. Glimpses of the existing turbines are already possible, and it is likely that the proposed most western turbines will equally be visible. Considering that its setting is focused on the road, the Development will not lead to a setting impact. As such, this asset is not taken forward for further assessment.

Summary

- 7.3.35 Based on the above, the following assets have been taken forward for detailed settings assessment:
- Fort Augustus-Berneria Military Road (SM11484);
 - Corrieyairack Pass military road (SM6143, SM6142, SM6141, SM6140); and
 - Greenfield Farm (LB50834).

7.4 Fort Augustus-Berena military road, 1890 m west of Ceannacroc Lodge (SM11484)

Asset description

- 7.4.1 The Fort Augustus-Berneria military road is a mid-18th century road constructed by Major William Caulfeild to link the Hanoverian Garrison (in Fort Augustus) to Glenelg Barracks approximately 70 km west. The scheduled section survives as a grass and heather covered track approximately 6 km long and 5 m wide, however, it has received considerable damage over the years. The monument runs alongside the A887 and uphill of the valley which is characterised as a relatively open area with clear views from the road to the south and Beinneun Forrest.
- 7.4.2 At its closest point to the Site, the monument is located approximately 3.5 km north of it, but approximately 4.6 km north of the closest turbine (B3).

Statement of Significance

- 7.4.3 The monument is scheduled to protect its surviving elements which contribute to its scientific value (especially its archaeological interest) and its historic value as a rare survival of an 18th century military road.
- 7.4.4 Much of the road today is covered by grass and heather, but it seems to survive relatively well with the exception of the damage done by the dam near Ceannacroc Bridge. Some revetment on the lower side of the road down the slopes of the hill and drainage features survive, but most of these and other features have been washed away by water erosion.
- 7.4.5 Overall, the feature has the potential to enhance our understanding of the construction of 18th century military and transport constructions as well as understanding of the Jacobite/Hanoverian era in Scotland.



- 7.4.6 The links to Major William Caulfeild and later Thomas Telford also make a contribution to its historic value. Road improvements in the area by Telford at the start of the 19th century bypassed sections of the military road as it was found too steep for carriages. Constructed in the mid 18th century, it was no longer maintained once the Jacobite threat has ceased.

Setting and contribution to significance

- 7.4.7 The setting of the road is defined by its course along the bottom slopes of Ceannacroc Forest leading from Loch Cluanie and the A87 east towards Ceannacroc. The location of the military road was entirely born out of functionality and specific purpose, that is, the ability for wide ranging views across the landscape was unlikely a key contributor to deciding where it would be located. While its immediate setting, that is, its route, is important to understanding the original purpose of the road, the contribution of the wider rural and mountainous backdrop of the asset to its setting is of lesser importance here.

Potential impact

- 7.4.8 The purpose of the military road was to connect one point to another in the most efficient manner for transport purposes. It was not designed as a scenic route, nor was its siting in any way chosen for the ability of views across the wider surrounding landscape. The setting of the monument from where its cultural significance is best understood is limited to the road path itself. Beyond this, no contribution to its cultural significance is gained by the part of the wider mountains landscape within which the Site is located. The most westernmost existing turbines of Beinneun Wind Farm are visible in some views from this asset, and as such it is assumed that this will also be the case for the Development. Nevertheless, this is not considered to affect our ability to understand or appreciate the cultural significance of the asset, its setting (including the integrity of its setting). The ability for views across the road will not be impeded in any way and it is these views across the road which are of interest here. The Development would not harm the archaeological interest of the asset (which will remain intact and is best appreciated from close inspection of walking along the road), nor its historic value as a military road.
- 7.4.9 Based on the above, the Development is not considered to lead to any harm to the cultural significance of this asset.

7.5 Corrieyairack Pass military road (SM6143, SM6142, SM6141, SM6140)

Asset description

- 7.5.1 Corrieyairack Pass comprises a mid-18th century military road constructed under the direction of General Wade. The scheduled portion runs to a length of c. 3.5 km, but the entire route was c. 45 km long. It connected Fort August to Dalwhinnie across Glen Tarff, Culachy Forest and Corrieyairack Forest until it reached the lower areas to the north of Loch Laggan towards Dalwhinnie.
- 7.5.2 The scheduled sections of the road mainly appear to survive as a gravelly type surface which seems to be relatively well maintained and noticeable.
- 7.5.3 At its closest point to the Site, the monument is located approximately 11 km east of it.

Statement of Significance

- 7.5.4 The monument is scheduled to protect its surviving elements which contribute to its scientific value (especially its archaeological interest) and its historic value as a rare survival of an 18th century military road.



- 7.5.5 The monument seems to survive relatively well along the mountain range. It is no longer scheduled where it reaches Melgarve and appears to be (at least in part) covered by modern roads. It was originally intended for the road to be constructed of rammed stones with larger stones at the bottom demarcating its route, however, this does not appear to have been realised. As mentioned above, it mostly seems to consist of a gravelly type surface but the official scheduling entry for the asset notes that patches of flat stone cobbles have been noted along parts of the route. Some ditches along the uphill side have also been observed, however, these do not appear to stretch along the entirety of the route.
- 7.5.6 Overall, the feature has the potential to enhance our understanding of the construction of 18th century military roads. It is of particular importance on account it being part of the longest continuous stretch of a military road built on the orders of General Wade. General Wade's roads are recognised as being part of the first planned post-Roman roads in Britain, and it is this link to the General that informs its historic value.
- 7.5.7 The tie to the Jacobite rebellion also feeds into its historic value as this is what necessitated the creation of the roads. Jacobite forces are said to have encamped along the pass in 1745 leading to government forces approaching, however, no battle ensued as they retreated.
- 7.5.8 The road construction commenced April 1731 and it was completed in October of that year. It was later abandoned north of Laggan in 1830.

Setting and contribution to significance

- 7.5.9 The setting of the road is defined by its course along Glen Tarff, Culachy Forest and Corrieyairack Forest. The route of the road was shaped by the topography of the land here, often necessitating an almost zig zag type pattern where more straight lines were not possible.
- 7.5.10 While visibility of the surrounding landscape would have likely been considered on a practical level to see approaching troops and/or people, its location and shape was defined by the functionality of the route to connect Fort Augustus to Dalwhinnie across the pass. Corrieyairack Pass was in existence before the military road, however, it was not well used and certainly not fit for purpose to enable transporting troops.
- 7.5.11 While its immediate setting, that is, its route, is important to understanding the original purpose of the road, the contribution of the wider rural and mountainous backdrop of the asset to its setting is of lesser importance here.

Potential impact

- 7.5.12 The purpose of the military road was to connect Fort Augustus to Dalwhinnie utilising and strengthening Corrieyairack Pass. It was not designed as a scenic route, nor was its position specifically chosen for the ability of views across the wider surrounding landscape towards the Site or beyond it towards the Fort Augustus-Berena military road.
- 7.5.13 The setting of the monument from where its cultural significance is best understood is limited to the road path and its immediate landscape itself. Beyond this, no contribution to its cultural significance is gained by the part of the wider mountains landscape within which the Site is located.
- 7.5.14 Viewpoint 9 shows that from sections of the Scheduled Monument the Proposed Development will be visible. This is because the existing Beinneun Wind Farm is visible in the background views, so is Millennium which sits to its east/north-east. While the proposed eastern extension of Beinneun Wind Farm would mean turbines closer to the Scheduled



Monument, on account of the distance, they will only appear as marginally closer and will still blend in with the two existing wind farms.

- 7.5.15 It is not considered that this addition of turbines would affect our ability to understand or appreciate the cultural significance of the asset or its setting. The integrity of its setting will also be retained and remain unharmed.
- 7.5.16 The ability for views across the route itself will not be impeded in any way and it is these views across the road which are of interest here as opposed to wider background views to the west. The Development would not harm the archaeological interest of the asset (which will remain intact and is best appreciated from close inspection of walking along the road), nor its historic value as a military road.
- 7.5.17 Based on the above, the Development is not considered to lead to any harm to the cultural significance of this asset.

7.6 Greenfield Farm, Cruck Framed Barn (LB50834)

Asset description

- 7.6.1 The Category C listed barn at Greenfield is of late 18th century date. It is a rubble based structure with a later corrugated iron roof situated on agricultural land south of Loch Garry.
- 7.6.2 It lies c. 3.5 km south of the Site and is closest to turbine B7 (c. 3.8 km to its north).

Statement of Significance

- 7.6.3 The building is a good example of a traditional Scottish agricultural building with a cruck frame and has been listed on account of its architectural and historic values. Its functional design provides a good example of a rubble barn of the pre-improvement period which contributes to its architectural value. While some later additions are noted, there appears to be surviving original fabric.
- 7.6.4 The building's historic value is tied to the former township of Greenfield. Once a substantial township, it was largely abandoned by the 1790s before being resettled in the 1840s to 1850s. The building once formed part of a tenanted farm on the Glengarry estate once owned by the MacDonnells of Glengarry.

Setting and contribution to significance

- 7.6.5 The building's setting is restricted to the farm complex within which it is located as the ability to interpret and understand the building is directly related to the agricultural land. It once comprised part of a larger estate and included meadow and arable land, however, it is assumed that this has reduced in size. Its setting within the farm complex is key to understanding its architectural value and historic use. The barn is set within a complex of later agricultural buildings highlighting how the farm adapted over time.

Potential impact

- 7.6.6 The Development is likely to be visible from the building, however, as it was not accessible during the walkover survey and it was not possible to take observations from nearby roads, this could not be confirmed. As such, this asset is taken forward for further assessment to determine the potential for setting impacts in Chapter 8: Archaeology and Cultural Heritage.



8 CONCLUSIONS

8.1 General

- 8.1.1 The effect of the development proposals on the known and potential heritage resource will be a material consideration in determination of the planning application.
- 8.1.2 This study has identified no overriding cultural heritage constraints which are likely to prohibit development.
- 8.1.3 Overall, the Site is considered to have limited potential for post-medieval remains given the generally low levels of known heritage asset data captured by the Historic Environment Record. Furthermore, the construction of the existing Beinneun Wind Farm did not encounter any archaeological remains during its construction.
- 8.1.4 Where non-designated assets are recorded within the 1 km Study Area, they mainly represent post-medieval and modern activity. The remains of an abandoned post-medieval settlement, known as Daingean, are recorded c. 800 m to the south of the Site. Considering the Site's upland peat character, it is highly unlikely that associated settlement activity continued into the site.
- 8.1.5 The works required for the Development have the potential to result in the damage to or loss of any buried archaeological features which may be present within their footprint. This could in turn result in a total or partial loss of cultural significance of these heritage assets.
- 8.1.6 This HEDBA considered designated heritage assets within a 15 km Study Area for the purposes of a setting assessment. Assets outside of this range were included on a case-by-case basis. This was informed by review of the ZTV assessment leading to the identification of likely sensitive heritage assets that should be taken forward for a settings walkover survey. The results of the walkover survey then informed which assets should be taken forward for further detailed settings assessment. These assets comprised two scheduled military roads (SM11484, SM6143, SM6142, SM6141, SM6140) and a Category C listed barn (LB50834). While it was concluded in this assessment that the military roads were unlikely to experience a setting impact that could lead to harm to the cultural significance of the assets or the integrity of their respective settings, given their designations status and sensitivity, both these and the barn are to be taken forward for assessment in Chapter 8: Archaeology and Cultural Heritage.
- 8.1.7 The need for, scale, scope and nature of any further assessment and/or archaeological works should be agreed through consultation with the archaeological advisor advising Highlands Council on archaeological matters.



REFERENCES

Bibliography

- Ancient Monuments and Archaeological Areas Act 1979*. Available at: <http://www.legislation.gov.uk/ukpga/1979/46>.
- Chartered Institute for Archaeologists, 2014. *Standards and guidance for historic environment desk-based assessment*. Available at: <http://www.archaeologists.net/codes/ifa>
- Highways Agency, 2007. *Design Manual for Roads and Bridges, vol. 11, section 3, part 2: HA 208/07 Cultural Heritage*. Available at: <http://www.standardsforhighways.co.uk/ha/standards/dmr/vol11/section3/ha20807.pdf>
- Historic Environment Scotland Act 2014*. Available at: http://www.legislation.gov.uk/asp/2014/19/pdfs/asp_20140019_en.pdf
- Historic Environment Scotland 2016. *Historic Environment Scotland Policy Statement 2016*. Available at: <https://www.historicenvironment.scot/archives-and-research/publications/publication/?publicationId=f413711b-bb7b-4a8d-a3e8-a619008ca8b5>
- Historic Environment Scotland 2016b. *Managing Change in the Historic Environment: Setting*. Available at: <https://www.historicenvironment.scot/archives-and-research/publications/publication/?publicationId=f413711b-bb7b-4a8d-a3e8-a619008ca8b5>
- Historic Scotland 2016. *New Design in Historic Settings*. Available at: <https://www.historicenvironment.scot/archives-and-research/publications/publication/?publicationId=9b50b83c-1e60-4831-bc81-a60500ac5b29>
- Marine (Scotland) Act 2010*. Available at: http://www.legislation.gov.uk/asp/2010/5/pdfs/asp_20100005_en.pdf
- Planning (Listed Building Consent and Conservation Area Consent Procedure) (Scotland) Regulations 2015*. Available at: http://www.legislation.gov.uk/ssi/2015/243/pdfs/ssi_20150243_en.pdf
- Planning (Listed Buildings and Conservation Areas) (Scotland) Act 1997*. Available at: <http://www.legislation.gov.uk/ukpga/1997/9/contents>
- The Scottish Government 2011. *Planning Advice Note 2/2011: Planning and Archaeology*. Available at: <http://www.gov.scot/Resource/Doc/355385/0120020.pdf>
- The Scottish Government 2014a. *Our Place in Time - The Historic Environment Strategy for Scotland*. Available at: <http://www.gov.scot/Resource/0044/00445046.pdf>
- The Scottish Government 2014b. *Scottish Planning Policy*. Available at: <http://www.gov.scot/Resource/0045/00453827.pdf>
- Town and Country Planning (Development Management Procedure) (Scotland) Regulations 2013*. Available at: <http://www.legislation.gov.uk/ssi/2013/155/contents/made>

Historic Environment Records

Highlands Historic Environment Record (HHER)



Cartographic and Documentary Sources

1895 First Edition Ordnance Survey 25" Map (1:2,500)

1900 Edition Ordnance Survey 25" Map (1:2,500)

1924 Edition Ordnance Survey 25" Map (1:2,500)

1940 Provisional Edition Ordnance Survey (with 1960's additions) 25" Map (1:2,500)

1901 Ordnance Survey 6" Map (1:10,560)

1926 Ordnance Survey 6" Map (1:10,560)

1922 (revision, with additions in 1938) Provisional Edition Ordnance Survey 6" Map (1:10,560)

Online resources

<http://archaeologydataservice.ac.uk>

<https://canmore.org.uk/>

<http://portal.historicenvironment.scot/>



ANNEXES

Annex 1: Terminology

Glossary

The terminology used in this assessment, including relevant definitions contained within Scottish Planning Policy (2014):

Conservation	The process of maintaining and managing change to a heritage asset in a way that sustains and, where appropriate, enhances its significance.
Designated heritage assets	World Heritage Sites, Scheduled Monuments, Listed Buildings, Protected Wreck Sites, Inventory Gardens and Designed Landscapes, Inventory Battlefields and Conservation Areas designated under the relevant legislation.
Heritage asset	A building, monument, site, place, area or landscape identified as having a degree of significance meriting consideration in planning decisions, because of its heritage interest.
Historic environment	Physical evidence for human activity that connects people with place, linked with the associations we can see, feel and understand.
Historic environment record	A public, map-based data set, primarily intended to inform the management of the historic environment.
Setting	More than the immediate surroundings of a site or building, and may be related to the function or use of a place, or how it was intended to fit into the landscape of townscape, the view from it or how it is seen from areas round about, or areas that are important to the protection of the place, site or building.
Significance	The value of a heritage asset to this and future generations because of its heritage interest. That interest may be archaeological, architectural, artistic or historic. Significance derives not only from a heritage asset's physical presence, but also from its setting.
Value	An aspect of worth or importance

Chronology

Where referred to in the text, the main archaeological periods are broadly defined by the following date ranges:

Prehistoric		Historic	
Palaeolithic	970,000–9500 BC	Romano-British	AD 43–410
Early Post-glacial	9500–8500 BC	Early medieval	AD 410–1100
Mesolithic	8500–4100 BC	Medieval	AD 1100–1500
Neolithic	4100–2500 BC	Post-medieval	AD 1500–1800
Bronze Age	2500–700 BC	19th century	AD 1800–1899
Iron Age	800 BC–AD 400	Modern	1900–present day



Annex 2: Legislative and planning framework

Designated Heritage Assets:

Designation	Associated Legislation	Overview
World Heritage Sites	-	The United Nations Educational, Scientific and Cultural Organisation (UNESCO) World Heritage Committee inscribes World Heritage Sites for their Outstanding Universal Value (OUV) – <i>cultural and/or natural significance which is so exceptional as to transcend national boundaries and to be of common importance for present and future generations of all humanity</i> . Scotland protects its World Heritage Sites and their settings, including any buffer zones or equivalent, through the statutory designation process and through the planning system. The National Planning Policy Framework sets out detailed policies for the conservation and enhancement of the historic environment, including World Heritage Sites, through both plan-making and decision-taking.
Scheduled Monuments and Areas of Archaeological Importance	<i>Ancient Monuments and Archaeological Areas Act 1979</i>	Under the <i>Ancient Monuments and Archaeological Areas Act 1979</i> , the Secretary of State (DCMS) can schedule any site which appears to be of national importance because of its historic, architectural, traditional, artistic or archaeological interest. The function of compiling and maintaining the schedule of monuments in Scotland was conferred on Historic Environment Scotland under the <i>Historic Environment Scotland Act 2014</i> . Additional controls are placed upon works affecting Scheduled Monuments under the Act. Under the <i>Historic Environment Scotland Act 2014</i> powers are transferred to Historic Environment Scotland in relation to the grant, modification and revocation of Scheduled Monument Consent.
Listed Buildings	<i>Planning (Listed Buildings and Conservation Areas) (Scotland) Act 1997</i> <i>Planning (Listed Building Consent and Conservation Area Consent Procedure) (Scotland) Regulations 2015</i>	In Scotland, under Section 1 of the <i>Planning (Listed Buildings and Conservation Areas) Act 1990</i> , the Secretary of State is required to compile lists of buildings of special architectural or historic interest, on advice from such persons or bodies of persons as appear to him appropriate as having 'special knowledge of, or interest in, buildings of architectural or historic interest'. Under the <i>Historic Environment Scotland Act 2014</i> , this duty was conferred to Historic Environment Scotland. Under the same act functions in relation to the grant, modification and revocation of listed building consent was also conferred to Historic Environment Scotland. The process for applying for and determining applications for Listed Building Consent are addressed in the <i>Planning (Listed Building Consent and Conservation Area Consent Procedure) (Scotland) Regulations 2015</i> .
Conservation Areas	<i>Planning (Listed Buildings and Conservation Areas) (Scotland) Act 1997</i> <i>Planning (Listed Building Consent and Conservation Area Consent Procedure) (Scotland) Regulations 2015</i>	A Conservation Area is an area which has been designated because of its special architectural or historic interest, the character or appearance of which it is desirable to preserve or enhance. In most cases, Conservation Areas are designated by Local Planning Authorities. Section 64 (1) of the <i>Planning (Listed Buildings and Conservation Areas) (Scotland) Act 1997</i> requires authorities to pay special attention to the desirability of preserving or enhancing the character or appearance of Conservation Areas. Under the <i>Historic Environment Scotland Act 2014</i> , Historic Environment Scotland may also designate Conservation Areas. The process for applying for and determining applications for Conservation Area Consent are addressed in the <i>Planning (Listed Building Consent and Conservation Area Consent Procedure) (Scotland) Regulations 2015</i> .
Inventory Gardens and Designed	-	Both Inventories are administered by Historic Environment Scotland. These designations are non-statutory but are, nevertheless, material considerations in the planning process. Local authorities must consult Historic Environment Scotland on development



Designation	Associated Legislation	Overview
Landscapes and Inventory Battlefields		proposals that they consider will affect an Inventory Garden and Designed Landscape and should ensure any impacts upon Inventory Battlefields are considered.
Historic Marine Protected Area	<i>Marine (Scotland) Act 2010</i>	The <i>Marine (Scotland) Act 2010</i> allows the Scottish Ministers to designate any area of the Scottish marine protection area as a historic marine protected area (a 'Historic MPA') for the purpose of preserving a marine historic asset of national importance.

Scottish Planning Policy (SPP):

National Planning Framework 4 (NPF4) (February 2023) Available at: National Planning Framework 4 - gov.scot (Accessed 04/08/25)	
Policy 7 Historic assets and places	<p>a) Development proposals with a potentially significant impact on historic assets or places will be accompanied by an assessment which is based on an understanding of the cultural significance of the historic asset and/or place. The assessment should identify the likely visual or physical impact of any proposals for change, including cumulative effects and provide a sound basis for managing the impacts of change. Proposals should also be informed by national policy and guidance on managing change in the historic environment, and information held within Historic Environment Records.</p> <p>b) Development proposals for the demolition of listed buildings will not be supported unless it has been demonstrated that there are exceptional circumstances and that all reasonable efforts have been made to retain, reuse and/or adapt the listed building. Considerations include whether the: i. building is no longer of special interest; ii. building is incapable of physical repair and re-use as verified through a detailed structural condition survey report; iii. repair of the building is not economically viable and there has been adequate marketing for existing and/or new uses at a price reflecting its location and condition for a reasonable period to attract interest from potential restoring purchasers; or iv. demolition of the building is essential to delivering significant benefits to economic growth or the wider community.</p> <p>c) Development proposals for the reuse, alteration or extension of a listed building will only be supported where they will preserve its character, special architectural or historic interest and setting. Development proposals affecting the setting of a listed building should preserve its character, and its special architectural or historic interest.</p> <p>d) Development proposals in or affecting conservation areas will only be supported where the character and appearance of the conservation area and its setting is preserved or enhanced. Relevant considerations include the: i. architectural and historic character of the area; ii. existing density, built form and layout; and iii. context and siting, quality of design and suitable materials.</p> <p>e) Development proposals in conservation areas will ensure that existing natural and built features which contribute to the character of the conservation area and its setting, including structures, boundary walls, railings, trees and hedges, are retained).</p> <p>f) Demolition of buildings in a conservation area which make a positive contribution to its character will only be supported where it has been demonstrated that: i. reasonable efforts have been made to retain, repair and reuse the building; ii. the building is of little townscape value; iii. the structural condition of the building prevents its retention at a reasonable cost; or iv. the form or location of the building makes its reuse extremely difficult.</p>



National Planning Framework 4 (NPF4) (February 2023)

Available at: [National Planning Framework 4 - gov.scot](https://www.gov.scot) (Accessed 04/08/25)

- g) Where demolition within a conservation area is to be followed by redevelopment, consent to demolish will only be supported when an acceptable design, layout and materials are being used for the replacement development.
- h) Development proposals affecting scheduled monuments will only be supported where: i. direct impacts on the scheduled monument are avoided; ii. significant adverse impacts on the integrity of the setting of a scheduled monument are avoided; or iii. exceptional circumstances have been demonstrated to justify the impact on a scheduled monument and its setting and impacts on the monument or its setting have been minimised.
- i) Development proposals affecting nationally important Gardens and Designed Landscapes will be supported where they protect, preserve or enhance their cultural significance, character and integrity and where proposals will not significantly impact on important views to, from and within the site, or its setting.
- j) Development proposals affecting nationally important Historic Battlefields will only be supported where they protect and, where appropriate, enhance their cultural significance, key landscape characteristics, physical remains and special qualities.
- k) Development proposals at the coast edge or that extend offshore will only be supported where proposals do not significantly hinder the preservation objectives of Historic Marine Protected Areas.
- l) Development proposals affecting a World Heritage Site or its setting will only be supported where their Outstanding Universal Value is protected and preserved.
- m) Development proposals which sensitively repair, enhance and bring historic buildings, as identified as being at risk locally or on the national Buildings at Risk Register, back into beneficial use will be supported.
- n) Enabling development for historic environment assets or places that would otherwise be unacceptable in planning terms, will only be supported when it has been demonstrated that the enabling development proposed is: i. essential to secure the future of an historic environment asset or place which is at risk of serious deterioration or loss; and ii. the minimum necessary to secure the restoration, adaptation and long-term future of the historic environment asset or place. The beneficial outcomes for the historic environment asset or place should be secured early in the phasing of the development, and will be ensured through the use of conditions and/or legal agreements.
- o) Non-designated historic environment assets, places and their setting should be protected and preserved in situ wherever feasible. Where there is potential for non-designated buried archaeological remains to exist below a site, developers will provide an evaluation of the archaeological resource at an early stage so that planning authorities can assess impacts. Historic buildings may also have archaeological significance which is not understood and may require assessment. Where impacts cannot be avoided they should be minimised. Where it has been demonstrated that avoidance or retention is not possible, excavation, recording, analysis, archiving, publication and activities to provide public benefit may be required through the use of conditions or legal/planning obligations. When new archaeological discoveries are made during the course of development works, they must be reported to the planning authority to enable agreement on appropriate inspection, recording and mitigation measures.



Planning Advice Note 2/2011: Planning and Archaeology Available at: http://www.gov.scot/Resource/Doc/355385/0120020.pdf (Accessed on 24/04/2017)	
Para. 4	Scottish Ministers' policy for protecting archaeological remains through the planning system is contained in SPP. Government policy is to protect and preserve archaeological sites and monuments, and their settings, in situ wherever feasible. Where preservation in situ is not possible, planning authorities should consider applying conditions to planning consents, listed building consents and conservation area consents to ensure that an appropriate level of excavation, recording, analysis, publication and archiving is carried out before and/or during development. The interpretation and preservation in situ of archaeological remains should be seen as a positive resource that can contribute to a sense of place in new development.
Para. 5	In considering planning applications, planning authorities should take into account the relative importance of archaeological sites. World heritage sites are of international importance and scheduled monuments are of national importance and should be preserved in situ and in an appropriate setting. However, not all archaeological sites and monuments are of equal importance.
Para. 15	Prospective developers should undertake an initial assessment of whether a property or area is known or likely to contain archaeological remains as part of their pre-planning application research into development potential. Developers may wish to commission their own professionally competent archaeological organisation or consultant, whose work should meet the Institute for Archaeologists (IfA) [CIfA] quality standards, to develop this aspect of their proposals. It is strongly recommended that developers seek early advice from the local authority archaeologist before considering the submission of a planning or a listed building application in cases where remains are known or thought likely to exist. Such pre-application consultations and discussions can identify potential archaeological issues at an early stage, thereby assisting the smooth processing of a planning application by minimising unnecessary and potentially costly delays. Where a proposed development may affect a scheduled monument or its setting contact should be made with Historic Scotland [Historic Environment Scotland] at the earliest opportunity.

Local Planning Policy:

Highland-wide Local Development Plan (adopted April 2012)		
Policy ref.	Title	Scope
Policy 57	Natural, Built and Cultural Heritage	All development proposals will be assessed taking into account the level of importance and type of heritage features, the form and scale of the development, and any impact on the feature and its setting, in the context of the policy framework detailed in Appendix 2. The following criteria will also apply: 1. For features of local/regional importance we will allow developments if it can be satisfactorily demonstrated that they will not have an unacceptable impact on the natural environment, amenity and heritage resource. 2. For features of national importance we will allow developments that can be shown not to compromise the natural environment, amenity and heritage resource. Where there may be any significant adverse effects, these must be clearly outweighed by social or economic benefits of national importance. It must also be shown that the development will support communities in fragile areas who are having difficulties in keeping their population and services. 3. For features of international importance developments likely to have a significant effect on a site, either alone or in combination with other plans or



Highland-wide Local Development Plan (adopted April 2012)		
Policy ref.	Title	Scope
		<p>projects, and which are not directly connected with or necessary to the management of the site for nature conservation will be subject to an appropriate assessment. Where we are unable to ascertain that a proposal will not adversely affect the integrity of a site, we will only allow development if there is no alternative solution and there are imperative reasons of overriding public interest, including those of a social or economic nature. Where a priority habitat or species (as defined in Annex 1 of the Habitats Directive) would be affected, development in such circumstances will only be allowed if the reasons for overriding public interest relate to human health, public safety, beneficial consequences of primary importance for the environment, or other reasons subject to the opinion of the European Commission (via Scottish Ministers). Where we are unable to ascertain that a proposal will not adversely affect the integrity of a site, the proposal will not be in accordance with the development plan within the meaning of Section 25(1) of the Town and Country Planning (Scotland) Act 1997.</p> <p>Note: Whilst Appendix 2 groups features under the headings international, national and local/regional importance, this does not suggest that the relevant policy framework will be any less rigorously applied. This policy should also be read in conjunction with the Proposal Map.</p> <p>The Council intends to adopt the Supplementary Guidance on Wild Areas in due course. The main principles of this guidance will be:</p> <ul style="list-style-type: none">• to provide mapping of wild areas;• to give advice on how best to accommodate change within wild areas whilst safeguarding their qualities;• to give advice on what an unacceptable impact is; and• to give guidance on how wild areas could be adversely affected by development close to but not within the wild area itself. <p>In due course the Council also intends to adopt the Supplementary Guidance on the Highland Historic Environment Strategy. The main principles of this guidance will ensure that:</p> <ul style="list-style-type: none">• Future developments take account of the historic environment and that they are of a design and quality to enhance the historic environment bringing both economic and social benefits;• It sets a proactive, consistent approach to the protection of the historic environment.
Policy 61	Landscape	New developments should be designed to reflect the landscape characteristics and special qualities identified in the Landscape Character Assessment of the area in which they are proposed. This will include consideration of the appropriate scale,



Highland-wide Local Development Plan (adopted April 2012)		
Policy ref.	Title	Scope
		<p>form, pattern and construction materials, as well as the potential cumulative effect of developments where this may be an issue. The Council would wish to encourage those undertaking development to include measures to enhance the landscape characteristics of the area. This will apply particularly where the condition of the landscape characteristics has deteriorated to such an extent that there has been a loss of landscape quality or distinctive sense of place. In the assessment of new developments, the Council will take account of Landscape Character Assessments, Landscape Capacity Studies and its supplementary guidance on Siting and Design and Sustainable Design, together with any other relevant design guidance.</p> <p>Note: The principles and justification underpinning the Council's approach to sustainable developments are contained in the supplementary guidance: "Sustainable Design". The key principles underlying this guidance are set out in Policy 28: Sustainable Design.</p>



Annex 3: Gazetteer of heritage assets within the Study Area

HHER Monument Data

Ref	Name	Mon Type	Period	Easting	Northing
MHG22158	Loyne Bridge	BRIDGE	Post-medieval	220000	808000
MHG22989	Daingean	SETTLEMENT	Post-medieval	223700	803100
MHG23108	Paitnagreen	FARMSTEAD	Undated	219000	806500
MHG23109	Paitnagreen	FARMSTEAD	Undated	218800	805900
MHG58693	Loch Loyne Dam	DAM	Modern	220048	807943
MHG58926	Commemorative Cairn - Paitnagreen	COMMEMORATIVE CAIRN	Modern	219531	806776

HHER Events Data

Event ID	Name	Easting	Northing
EHG1448	Ceannacroc, Glenmoriston: Woodland Plan	221820	810655
EHG3222	DBA and walkover survey - proposed Beinneun windfarm	222509	806554
EHG3851	DBA and walkover survey - Aberchalder, Invergarry	225595	804354
EHG4197	DBA and walkover survey - proposed Millennium Wind Farm, Glen Moriston	228466	809283
EHG4439	DBA and walkover survey - Millennium Wind Farm Extension	226328	807154
EHG4440	DBA and walkover survey - Millennium Wind Farm (Section 36 Extension)	227574	807047
EHG4503	Site visit - Beinneun Windfarm Extension	222000	805154
EHG4545	DBA and Walkover Survey - Millennium Wind Farm, Glenmoriston, Inverness	228307	807176
EHG4630	Walkover and Marking Out Survey - Daingean Township, Ardochy Forest	223753	803066
EHG506	DBA - Drumnadrochit/Fort Augustus, Overhead Power Line Replacement	233731	814736
EHG5459	Desk-based assessment and walkover survey - proposed FM refurbishment, Ceannacroc-Inverwick	226990	811768
EHG5459	Desk-based assessment and walkover survey - proposed FM refurbishment, Ceannacroc-Inverwick	227043	811793



Event ID	Name	Easting	Northing
EHG5984	DBA and walkover survey - Skye-Fort Augustus OHL Reinforcement	151190	831326
EHG6044	DBA and walkover survey - proposed Tomchrasky Wind Farm	222901	812894
EHG6148	DBA and walkover survey - proposed Bunloinn Wind Farm	217575	808000



Annex 4: Settings visit photographs



Photograph 1: View towards Development from western edge of Balnacarn (looking SW)



Photograph 2: View of Scheduled Monument at Balnacarn from bridge at Balnacarn (looking E/NE)



Photograph 3: View from southern edge of Scheduled Monument of Balnacarn noting Millennium Wind Farm along the ridgeline (looking S/SE)



Photograph 4: View across NE corner of Scheduled Monument at Balnacarn (looking N/NE)



Photograph 5: Listed Bridge at Ceanacroc (looking S/SE)



Photograph 6: Looking N at Blar na Leine Battlefield from Laggan Locks



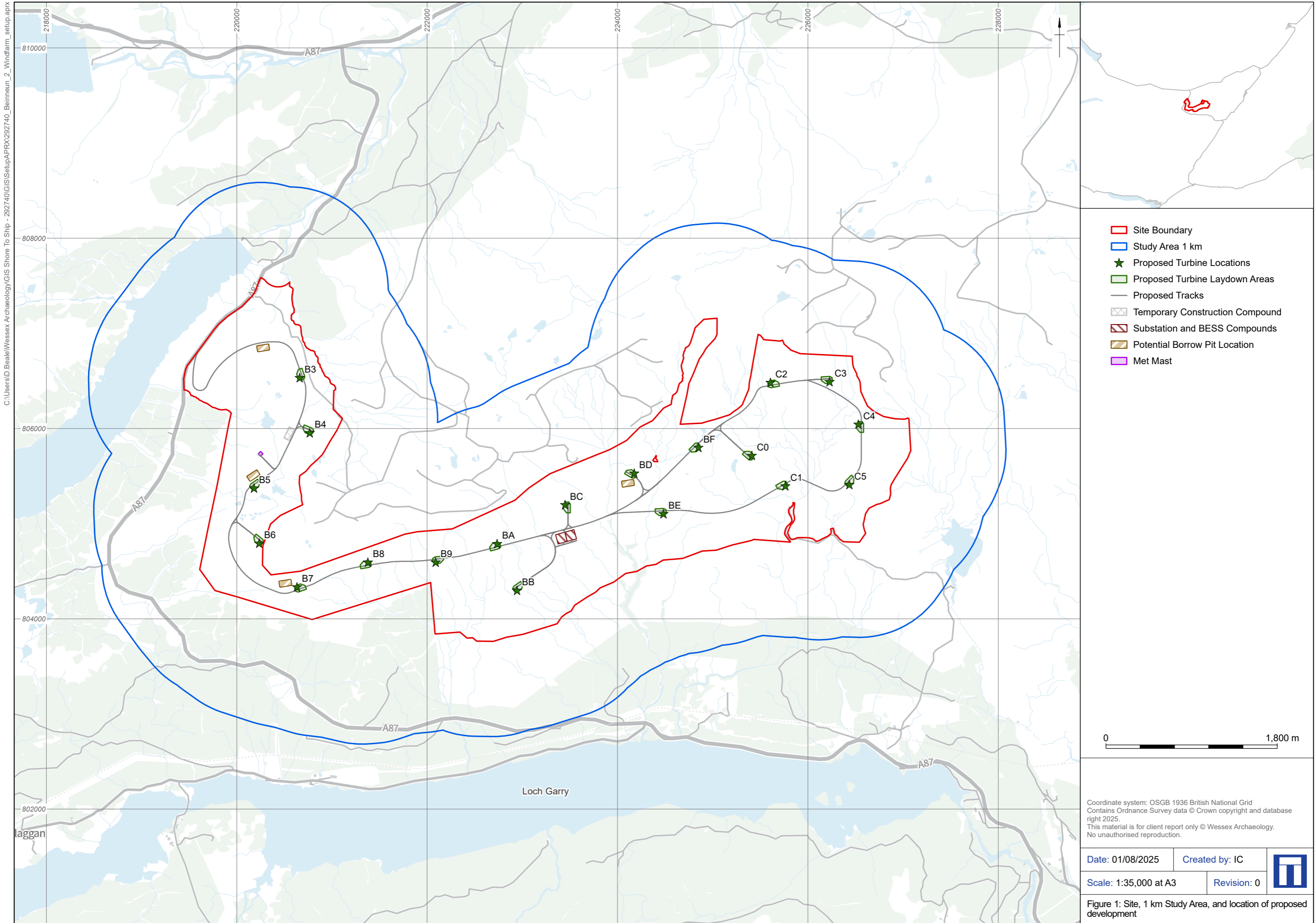
Photograph 7: View into the Site and existing Beinneun from access gate



Photograph 8: View of mountain range opposite access gate (looking W/SW)



Photograph 9: View towards Loyne Bridge and associated dam from access gate (looking W/NW)



- ▭ Site Boundary
- ▭ Study Area 1 km
- ★ Proposed Turbine Locations
- ▭ Proposed Turbine Laydown Areas
- Proposed Tracks
- Temporary Construction Compound
- Substation and BESS Compounds
- Potential Borrow Pit Location
- ▭ Met Mast

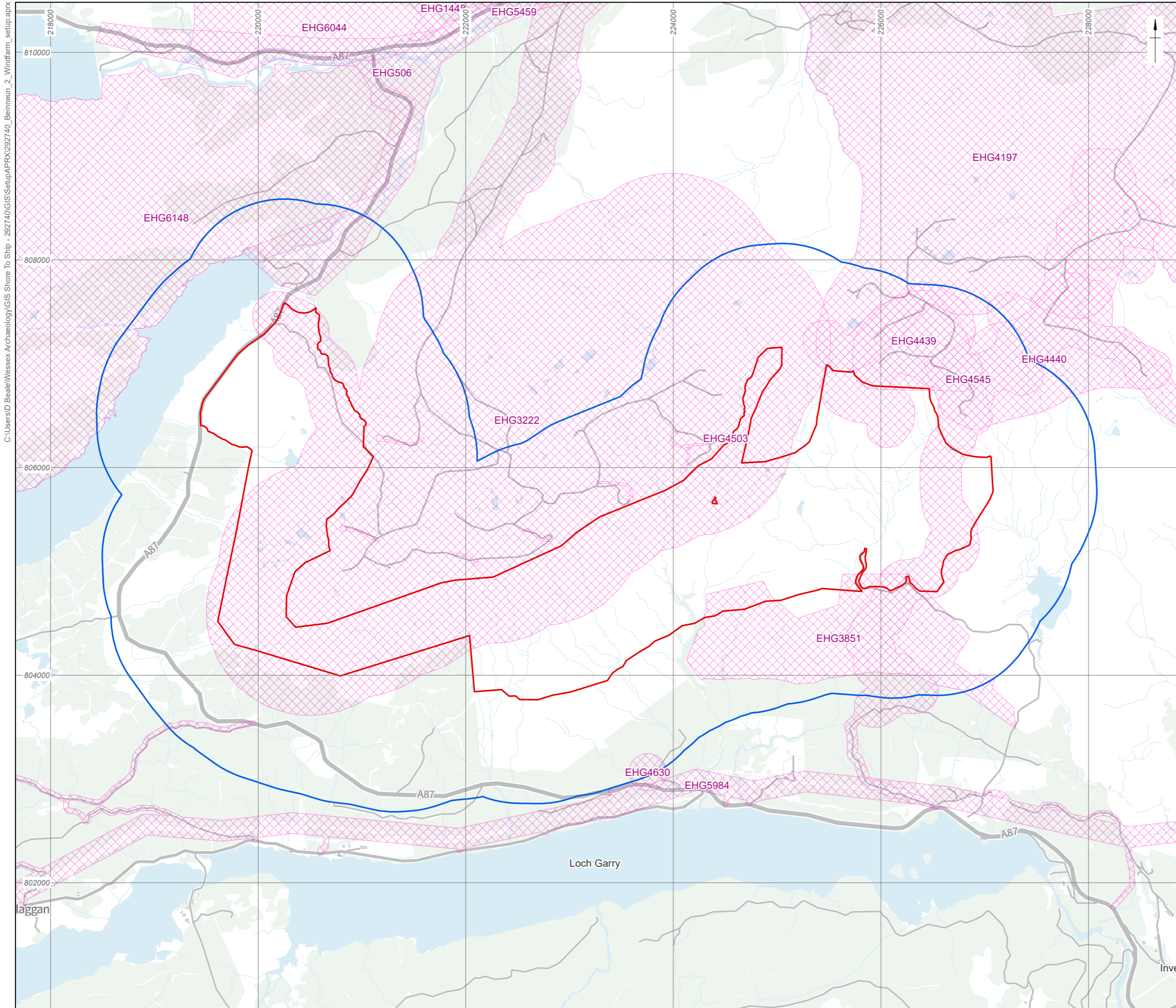
0 1,800 m

Coordinate system: OSGB 1936 British National Grid
 Contains Ordnance Survey data © Crown copyright and database right 2025.
 This material is for client report only © Wessex Archaeology.
 No unauthorised reproduction.

Date: 01/08/2025	Created by: IC	
Scale: 1:35,000 at A3	Revision: 0	

Figure 1: Site, 1 km Study Area, and location of proposed development

C:\Users\J.D.Beale\Wessex Archaeology\GIS\Shore To Ship - 202740\GIS\Setup\APRX\202740_Beinneun_2_Windfarm_setup.aprx



- ▭ Site Boundary
- ▭ Study Area 1 km
- ▨ Archaeological Events



Coordinate system: OSGB 1936 British National Grid
 Contains Ordnance Survey data © Crown copyright and database right 2025.
 This material is for client report only © Wessex Archaeology.
 No unauthorised reproduction.

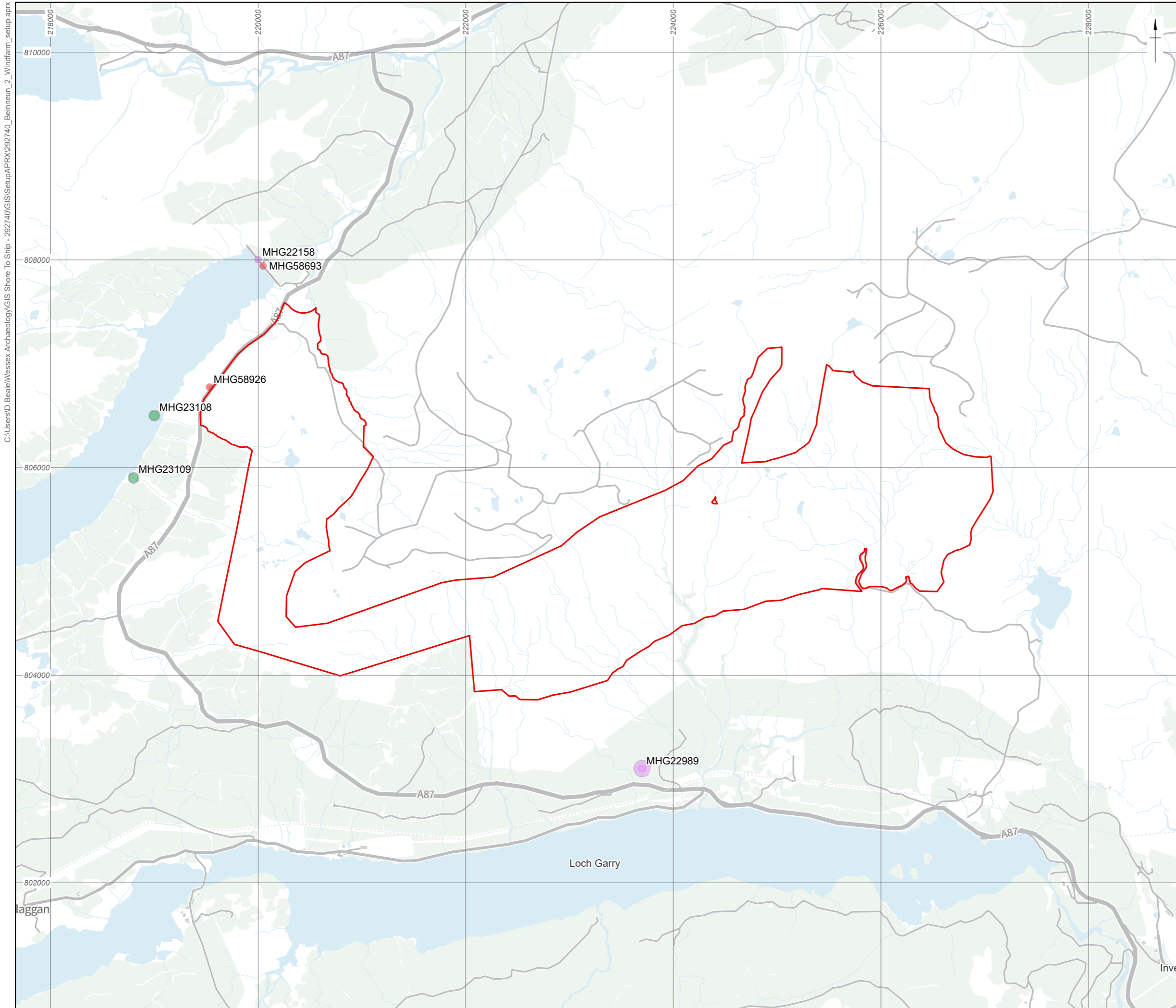
Date: 01/08/2025 Created by: IC

Scale: 1:35,000 at A3 Revision: 0



Figure 3: Site, 1 km Study Area, and HHER Archaeological Events

C:\Users\J.Beale\Wessex Archaeology\GIS\Shore To Ship - 202740\GIS\Setup\APRX\202740_Beinneun_2_Windfarm_setup.aprx



- Site Boundary
- PeriodFrom
- Post-medieval
- Modern
- Undated



Coordinate system: OSGB 1936 British National Grid
 Contains Ordnance Survey data © Crown copyright and database right 2025.
 This material is for client report only © Wessex Archaeology.
 No unauthorised reproduction.

Date: 01/08/2025 Created by: IC

Scale: 1:35,000 at A3 Revision: 0



Figure 4: Site, 1 km Study Area and HHER Monument Data

C:\Users\christian\Wessex Archaeology\GIS Shore To Ship - GIS\Wessex\Projects\292740\GIS\Setup\APRX\292740_Beinneun_2_Windfarm_setup.aprx



- Site Boundary
- Study Area

0 1,350 m

Coordinate system: OSGB 1936 British National Grid
Contains Ordnance Survey data © Crown copyright and database right 2024.
This material is for client report only © Wessex Archaeology.
No unauthorised reproduction.

Date: 30/06/2025 Created by: IC

Scale: 1:26,281 at A3 Revision: 0



Figure 5: Historic Mapping (1902)



Wessex Archaeology Ltd registered office Portway House, Old Sarum Park, Salisbury, Wiltshire SP4 6EB
Tel: 01722 326867 Fax: 01722 337562 info@wessexarch.co.uk www.wessexarch.co.uk

